

June car production dips but year to date still up

Production figures released today by the Office for National Statistics show that:

Car production in June 2002

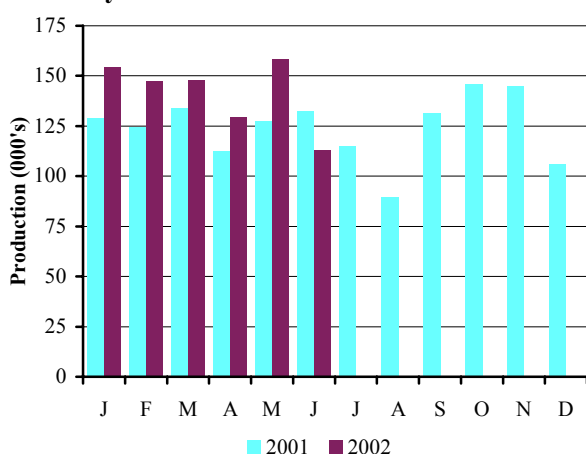
fell by 15 per cent

Car production in YTD 2002

is up 12 per cent

Car Production						
	June 2001	June 2002	% chg.	YTD 2001	YTD 2002	% chg.
Total	132,672	112,752	-15.0%	759,495	850,313	12.0%
Home	50,385	33,842	-32.8%	303,510	313,619	3.3%
% of total	38.0%	30.0%		40.0%	36.9%	
Export	82,287	78,910	-4.1%	455,985	536,694	17.7%
% of total	62.0%	70.0%		60.0%	63.1%	

Monthly Car Production 2001-2002



- Car production in June fell 15 per cent to 112,752 units. This is the first time output has fallen in 2002, but follows strong growth over the first five months of the year.
- Both output for export and for the home market were up over the year to date but dipped 4.1 per cent and 32.8 per cent respectively in June.

Commenting on the latest figures, SMMT chief executive Christopher Macgowan said, 'In the past week we've learned that Britain still has the two most efficient car plants in Europe, Nissan's factory in Tyne and Wear and Toyota's plant in Derbyshire. June's dip in total output appears disappointing, but is largely due to rationalisation of production sites and model ranges. The fact that total output in the first half of the year is up by 12 per cent, shows the underlying strength of UK car manufacturing.'

Press contacts:

Al Clarke

Tel: 020 7344 9226

acclarke@smmmt.co.uk

Jon Stanley

Tel: 020 7344 9263

jstanley@smmmt.co.uk

Nigel Wonnacott

Tel: 020 7344 9219

nwonnacott@smmmt.co.uk

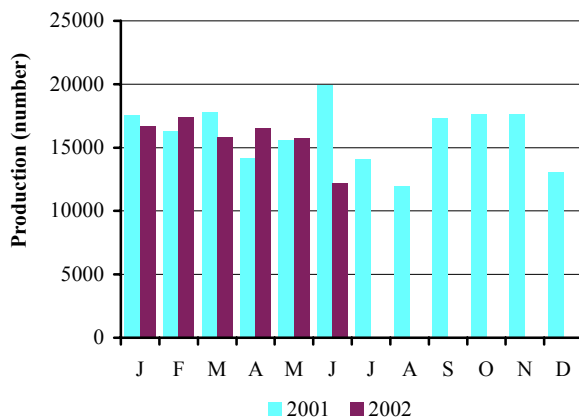
June's CV output sees pause in recent growth trends

Production figures released today by the Office for National Statistics show:

CV production in June 2002 fell 38.7 per cent
CV production for YTD 2002 is down 6.8 per cent

	June 2001	June 2002	% chg.	YTD 2001	YTD 2002	% chg.
Total	19,940	12,215	-38.7%	101,298	94,441	-6.8%
Home	9,921	4,952	-50.1%	58,388	40,853	-30.0%
% of total	49.8%	40.5%		57.6%	43.3%	
Export	10,019	7,263	-27.5%	42,910	53,588	24.9%
% of total	50.2%	59.5%		42.4%	56.7%	

Monthly CV Production 2001-2002



- June CV production fell 38.7 per cent to 12,215 units, denting recent growth trends. The first six months saw output down 6.8 per cent on 2001 levels to 94,441 units.
- Home market output fell 50.1 per cent. Exports fell 27.5 per cent, marking the end of twelve straight month's growth.

Commenting on the figures, SMMT chief executive Christopher Macgowan said, 'Growth in CV production slowed this month, but this is set against a strong showing last year. Weakening markets in Europe and the effects of restructuring and some rescheduling at key UK plants contributed to the change. The loss of car-derived van production at Dagenham made an impact this month and clearly EU markets are getting softer.'

He added, 'Production growth has been very encouraging recently and we don't yet see any need to adjust our forecast for the year-end. We think this year's annual output will be better than the 2001 total of 192,873 units.'

Press contact

Robin Dickeson

Tel: 020 7344 9222

rdickeson@smm.co.uk

	PASSENGER CARS			COMMERCIAL VEHICLES		
	Total	For Home	For Export	Total	For Home	For Export
1991	1 236 900	631 515	605 385	217 141	106 424	110 717
1992	1 291 880	702 590	589 290	248 453	118 140	130 313
1993 a	1 375 524	842 648	532 876	193 467	102 320	91 147
1994	1 466 823	848 142	618 681	227 815	132 270	95 545
1995	1 532 084	787 473	744 611	233 011	140 634	92 377
1996	1 686 134	777 922	908 212	238 314	125 830	112 484
1997	1 698 001	736 090	961 911	237 706	134 304	103 402
1998	1 748 258	727 531	1 020 727	227 379	124 538	102 841
1999	1 786 623	648 146	1 138 477	185 905	110 983	74 922
2000	1 641 452	578 462	1 062 990	172 442	96 261	76 181
2001	1 492 365	598 111	894 254	192 873	96 654	96 219
2000 Q1	494 311	179 401	314 910	49 972	24 666	25 306
2000 Q2	433 240	140 548	292 692	52 061	27 345	24 716
2000 Q3	335 106	145 558	189 548	29 249	18 588	10 661
2000 Q4	378 795	112 955	265 840	41 160	25 662	15 498
2001 Q1	387 100	160 646	226 454	51 623	31 952	19 671
2001 Q2	372 395	142 864	229 531	49 675	26 436	23 239
2001 Q3	335 790	152 753	183 037	43 347	21 032	22 315
2001 Q4	397 080	141 848	255 232	48 228	17 234	30 994
2002 Q1	449 755	194 579	255 176	49 940	24 630	25 310
2002 Q2	400 529	119 143	281 386	44 501	16 223	28 278
2000 Jan	146 990	50 747	96 243	13 222	6 104	7 118
2000 Feb	162 164	66 591	95 573	17 166	8 534	8 632
2000 Mar	185 157	62 063	123 094	19 584	10 028	9 556
2000 Apr	124 971	38 011	86 960	15 766	7 763	8 003
2000 May	152 008	46 917	105 091	17 170	8 151	9 019
2000 Jun	156 261	55 620	100 641	19 125	11 431	7 694
2000 Jul	126 372	55 823	70 549	13 372	8 342	5 030
2000 Aug	74 761	32 965	41 796	5 885	3 628	2 257
2000 Sep	133 973	56 770	77 203	9 992	6 618	3 374
2000 Oct	131 522	38 712	92 810	13 872	8 565	5 307
2000 Nov	150 716	47 115	103 601	16 189	10 418	5 771
2000 Dec	96 557	27 128	69 429	11 099	6 679	4 420
2001 Jan	128 921	50 675	78 246	17 580	11 315	6 265
2001 Feb	124 163	55 434	68 729	16 290	10 085	6 205
2001 Mar	134 016	54 537	79 479	17 753	10 552	7 201
2001 Apr	112 547	45 865	66 682	14 172	8 097	6 075
2001 May	127 176	46 614	80 562	15 563	8 418	7 145
2001 Jun	132 672	50 385	82 287	19 940	9 921	10 019
2001 Jul	114 878	50 943	63 935	14 055	6 427	7 628
2001 Aug	89 350	43 180	45 540	11 960	5 994	5 966
2001 Sep	131 562	58 000	73 562	17 332	8 611	8 721
2001 Oct	145 984	53 206	92 778	17 607	6 697	10 910
2001 Nov	144 989	51 841	93 148	17 588	6 051	11 537
2001 Dec	106 107	36 801	69 306	13 033	4 486	8 547
2002 Jan	154 368	69 454	84 914	16 697	8 280	8 417
2002 Feb	147 552	65 707	81 845	17 389	10 016	7 373
2002 Mar	147 835	59 418	88 417	15 854	6 334	9 520
2002 Apr	129 541	36 069	93 472	16 534	5 451	11 083
2002 May	158 236	49 232	109 004	15 752	5 820	9 932
2002 June	112 752	33 842	78 910	12 215	4 952	7 263

Percentage change for latest three months on:

Previous three months	-10.9	-38.8	10.3	-10.9	-34.1	11.7
Same period last year	7.6	-16.6	22.6	-10.4	-38.6	21.7

a - 5 week month or 14 week quarter or 53 week year

Source: Office for National Statistics

