

## CV production ends the year on a high, car output turns corner

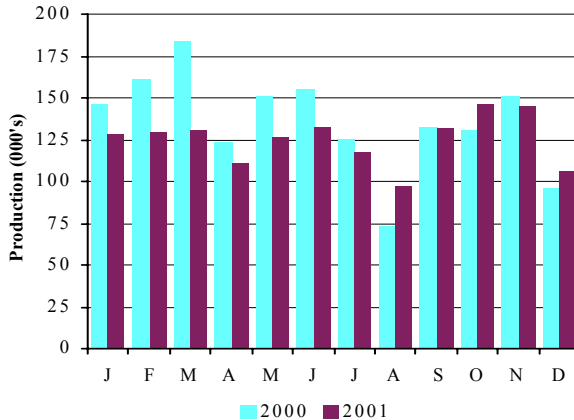
Production figures released today by the Office for National Statistics show that:

- **Car production in December 2001** rose by **9.7 per cent**
- **Car production in full year 2001** fell by **9.1 per cent**
  
- **CV production in December 2001** rose by **17.4 per cent**
- **CV production in full year 2001** rose by **11.8 per cent**

### Car production

	Dec 2000	Dec 2001	% chg.	Year 2000	Year 2001	% chg.
<b>Total</b>	96,557	105,888	9.7%	1,641,452	1,492,146	-9.1%
<b>Home</b>	27,128	36,610	35.0%	578,462	597,920	3.4%
% of total	28.1%	34.6%		35.2%	40.1%	
<b>Export</b>	69,429	69,278	-0.2%	1,062,990	894,226	-15.9%
% of total	71.9%	65.4%		64.8%	59.9%	

Monthly Car Production 2000-2001



- Car production in December rose 9.7 per cent to 105,888 units. Full year output fell 9.1 per cent to 1,492,146 units.
- In December, production for the home market rose 35 per cent to 36,610 units. Production for export dipped 0.2 per cent to 69,278 units.

In the first quarter of 2001, car output fell by 21.7 per cent followed by 14 per cent in quarter two. By quarter three it had stabilised rising 0.2 per cent, with growth of 4.8 per cent in the last three months of the year.

Commenting on the end of year figures for CV and car production, SMMT chief executive Christopher Macgowan said, 'Seven straight months growth for United Kingdom CV production is excellent news. And the prospects for the future look even better, with strong demand both here and on the mainland.'

'December's 9.7 per cent rise also signalled a bright end to the year for car manufacturing. Car output seems to have turned the corner after some disappointing figures in the first half of 2001. Volumes rose by 4.8 per cent in the last quarter and we are now looking forward to more steady growth in 2002 and 2003.'

➤ **December commercial vehicle exports up 93.4 per cent**

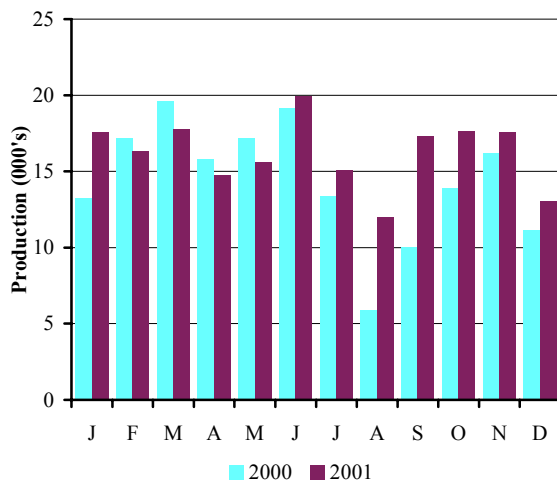
➤ **Annual CV production best since 1998**

**Commercial vehicle production**

	Dec 2000	Dec 2001	% chg.	YTD 2000	YTD 2001	% chg.
<b>Total</b>	11,099	13,032	17.4%	172,442	192,872	11.8%
<b>Home</b>	6,679	4,485	-32.8%	96,261	96,652	0.4%
% of total	60.2%	34.4%		55.8%	50.1%	
<b>Export</b>	4,420	8,547	93.4%	76,181	96,220	26.3%
% of total	39.8%	65.6%		44.2%	49.9%	

Provisional figures from the Office for National Statistics show CV production up 17.4 per cent last month to 13,032 vehicles compared with 11,099 in December 2000.

**CV Production 2000-2001**



- Export production grew by 93.4 per cent in December, the seventh consecutive month of growth.
- Output for the home market dropped for the third straight month, down 32.8 per cent.
- UK CV output was up by 11.8 per cent for the year as a whole, to 192,872 units.

**December 2001 commercial vehicle production up 17.4 per cent**

December's CV output growth returned to double-digit rates, up 17.4 per cent. This follows the expansion at the GM Luton van plant offsetting declining output ahead of the closure of car and van assembly at Ford's Dagenham site. GM's car-derived van

output bounced back in December, following a drop in November 2001. Leyland Trucks' output dropped compared to December 2000, but the overall out look for Leyland remains positive. Output volumes elsewhere remained generally up or steady.

### **Year to date commercial vehicle production up 11.8 per cent**

UK commercial vehicle production is up 11.8 per cent for the year as a whole. Once again, the growth has been clearly led by the heavy van sector 2.5 to 3.5 tonnes, with light and medium trucks between 3.5 and 15 tonnes also doing well.

### **December exports up 93.4 per cent**

This was the seventh consecutive month of solid growth in exports. Growth continues to be influenced by industrial changes, which have seen UK plants building for specific sectors of the European commercial vehicle market.

### **Annual production best since 1998**

Importantly, this was the seventh straight month's rise in 2001. Annual growth was up 11.8 per cent and the SMMT expects this trend to continue as UK van plants continue to increase their output to support Europe-wide sales.

#### **Press contacts:**

Cars - Nigel Wonnacott	Tel: 020 7344 9219	<a href="mailto:nwonnacott@smtt.co.uk">nwonnacott@smtt.co.uk</a>
Jon Stanley	Tel: 020 7344 9263	<a href="mailto:jstanley@smtt.co.uk">jstanley@smtt.co.uk</a>
CVs - Robin Dickeson	Tel: 020 7344 9222	<a href="mailto:rdickeson@smtt.co.uk">rdickeson@smtt.co.uk</a>

	PASSENGER CARS			COMMERCIAL VEHICLES		
	Total	For Home	For Export	Total	For Home	For Export
	(GKAJ)		(GKAK)	(GKDF)		(GKDG)
<b>1992</b>	1 291 880	702 590	589 290	248 453	118 140	130 313
<b>1993 a</b>	1 375 524	842 648	532 876	193 467	102 320	91 147
<b>1994</b>	1 466 823	848 142	618 681	227 815	132 270	95 545
<b>1995</b>	1 532 084	787 473	744 611	233 001	140 624	92 377
<b>1996</b>	1 686 134	777 922	908 212	238 314	125 830	112 484
<b>1997</b>	1 698 001	736 090	961 911	237 706	134 304	103 402
<b>1998</b>	1 748 258	727 531	1 020 727	227 379	124 538	102 841
<b>1999</b>	1 786 623	648 146	1 138 477	185 905	110 983	74 922
<b>2000</b>	1 641 452	578 462	1 062 990	172 442	96 261	76 181
<b>2001</b>	1 492 146	597 920	894 226	192 872	96 652	96 220
<b>1999 Q1</b>	460 496	167 581	292 915	53 369	30 894	22 475
<b>1999 Q2</b>	448 932	155 973	292 959	50 546	30 556	19 990
<b>1999 Q3</b>	407 787	177 606	230 181	36 198	22 962	13 236
<b>1999 Q4</b>	469 408	146 986	322 422	45 792	26 571	19 221
<b>2000 Q1</b>	494 311	179 401	314 910	49 972	24 666	25 306
<b>2000 Q2</b>	433 240	140 548	292 692	52 061	27 345	24 716
<b>2000 Q3</b>	335 106	145 558	189 548	29 249	18 588	10 661
<b>2000 Q4</b>	378 795	112 955	265 840	41 160	25 662	15 498
<b>2001 Q1</b>	387 100	160 646	226 454	51 623	31 952	19 671
<b>2001 Q2</b>	372 395	142 864	229 531	49 675	26 436	23 239
<b>2001 Q3</b>	335 790	152 753	183 037	43 347	21 032	22 315
<b>2001 Q4</b>	396 861	141 657	255 205	48 227	17 232	30 995
<b>2000 Jan</b>	146 990	50 747	96 243	13 222	6 104	7 118
<b>2000 Feb</b>	162 164	66 591	95 573	17 166	8 534	8 632
<b>2000 Mar</b>	185 157	62 063	123 094	19 584	10 028	9 556
<b>2000 Apr</b>	124 971	38 011	86 960	15 766	7 763	8 003
<b>2000 May</b>	152 008	46 917	105 091	17 170	8 151	9 019
<b>2000 Jun</b>	156 261	55 620	100 641	19 125	11 431	7 694
<b>2000 Jul</b>	126 372	55 823	70 549	13 372	8 342	5 030
<b>2000 Aug</b>	74 761	32 965	41 796	5 885	3 628	2 257
<b>2000 Sep</b>	133 973	56 770	77 203	9 992	6 618	3 374
<b>2000 Oct</b>	131 522	38 712	92 810	13 872	8 565	5 307
<b>2000 Nov</b>	150 716	47 115	103 601	16 189	10 418	5 771
<b>2000 Dec</b>	96 557	27 128	69 429	11 099	6 679	4 420
<b>2001 Jan</b>	128 921	50 675	78 246	17 580	11 315	6 265
<b>2001 Feb</b>	124 163	55 434	68 729	16 290	10 085	6 205
<b>2001 Mar</b>	134 016	54 537	79 479	17 753	10 552	7 201
<b>2001 Apr</b>	112 547	45 865	66 682	14 172	8 097	6 075
<b>2001 May</b>	127 176	46 614	80 562	15 563	8 418	7 145
<b>2001 Jun</b>	132 672	50 385	82 287	19 940	9 921	10 019
<b>2001 Jul</b>	114 878	50 943	63 935	15 044	6 660	8 384
<b>2001 Aug</b>	89 350	43 180	45 540	11 960	5 994	5 966
<b>2001 Sep</b>	131 562	58 000	73 562	17 332	8 611	8 721
<b>2001 Oct</b>	145 984	53 206	92 778	17 607	6 697	10 910
<b>2001 Nov</b>	144 989	51 841	93 148	17 588	6 050	11 538
<b>2001 Dec</b>	105 888	36 610	69 278	13 032	4 485	8 547

**Percentage change for latest three months on:**

Previous three months	18.2	-15.4	39.4	11.3	-18.7	38.9
Same period last year	4.8	20.2	-4.0	17.2	-32.9	100.06

a - 5-week month or 14 week quarter or 53 week year

Source: Office for National Statistics

