

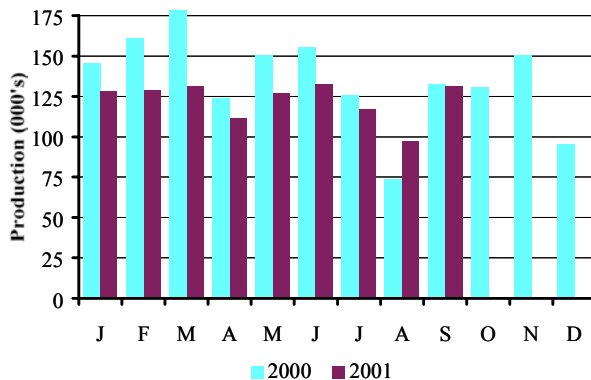
Car output levels out as CV production rises again

Production figures released today by the Office for National Statistics show that:

- ▲ **Car production in September 2001** fell by 1.8 per cent
- ▲ **Car production in YTD 2001** fell by 13.3 per cent
- **CV Production in September 2001** rose by 73 per cent

	Sep 2000	Sep 2001	% chg.	YTD 2000	YTD 2001	% chg.
Total	133,973	131,562	-1.8%	1,262,657	1,095,286	-13.3%
Home	56,770	58,000	2.2%	465,507	456,263	-2.0%
% of total	42.4%	44.1%		36.9%	41.7%	
Export	77,203	73,562	-4.7%	797,150	638,983	-19.8%
% of total	57.6%	55.9%		63.1%	58.3%	

Monthly Car Production 2000-2001



- Car production in September fell by 1.8 per cent to 131,562 units. In the year-to-date, production is down 13.3 per cent at 1,095,286 units.
- Production for the home market rose in September by 2.2 per cent to 58,000 units, while export production fell by 4.7 per cent to 73,562 units.

Commenting on today's figures, SMMT chief executive Christopher Macgowan said, 'Indications are that car production is beginning to stabilise after the difficult first nine months of the year. However, we are not out of the woods yet – despite good news from several manufacturers and record registrations in September - the industry as a whole still faces an uphill struggle against difficult legislation and tough economic conditions.'

Press contacts:

Jon Stanley:

Tel: 020 7344 9263

e-mail: jstanley@smm.co.uk

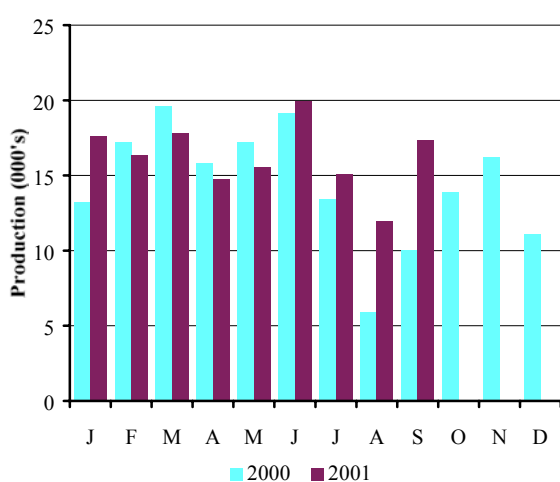
September CV production up again, 73 per cent this time.

- **September 2001 commercial vehicle production up 73.5 per cent**
- **Year to date commercial vehicle production up 10.2 per cent**
- **Exports up 158 per cent**
- **Four straight months growth**

As government figures, published today by the SMMT, show another excellent month for commercial vehicle production in the UK. SMMT chief executive Christopher Macgowan said, 'Four straight month's CV production growth is really good news for the UK, and we're confident that UK commercial vehicle production will keep going up, backed by increasing demand here and on the continent.'

	Sept 2000	Sept 2001	% chg.	YTD 2000	YTD 2001	% chg.
Total	9,992	17,332	73.5%	131,282	144,645	10.2%
Home	6,618	8,611	30.1%	70,599	79,418	12.5%
% of total	66.2%	49.7%		53.8%	54.9%	
Export	3,374	8,721	158.5%	60,683	65,227	7.5%
% of total	33.8%	50.3%		46.2%	45.1%	

Monthly CV Production 2000-2001



- ONS figures show CV production up 73.5 per cent this month to 17,332 vehicles compared with 9,992 in September 2000.
- Home and export markets grow in September. Overall, UK output is up by 10.2 per cent over the first nine months of the year, to 144,645 units.

September 2001 commercial vehicle production up 73.5 per cent.

This September's 73 per cent rise helped boost the figures and comes as UK plants increase production to cope with domestic and continental demand. Both the General Motors plant

in Luton and the Ford plant in Southampton are increasing output and together they account for over 70 per cent of UK commercial vehicle production.

Year to date commercial vehicle production up 10.2 per cent

UK commercial vehicle production is up over 10 per cent for the year-to-date. Once again, the growth has been clearly led by the light and medium van sector vans up to 3.5 tonnes, with light and medium trucks between 3.5 and 15 tonnes also doing well.

Exports up 158 per cent

This big increase is largely a result of industrial changes, which mean more factories tend to build for specific sectors of the European commercial vehicle market. The Ford and General Motors plants work on this basis, building right and left-hand control van models for the UK and continental markets. The Leyland truck plant in Lancashire runs on a similar basis, but for light and medium trucks and at lower volumes for this smaller market sector.

Four straight months growth.

Importantly, this was the fourth successive monthly rise this year. The trend is very good and the SMMT expects it to continue as UK plants continue to increase their output to support Europe-wide sales.

Press contact commercial vehicles:

Robin Dickeson Tel: 020 7344 9222 e-mail: rdickeson@smt.co.uk

UK car and commercial vehicle production – September 2001

	PASSENGER CARS			COMMERCIAL VEHICLES		
	Total (GKAJ)	For Home	For Export (GKAK)	Total (GKDF)	For Home	For Export (GKDG)
1986	1 018 962	831 406	187 556	228 685	178 909	49 776
1987	1 142 683	916 486	226 197	246 728	185 992	60 736
1988 a	1 226 835	1 012 965	213 870	317 343	232 896	84 447
1989	1 299 082	1 018 353	280 729	326 590	231 087	95 503
1990	1 295 610	889 841	405 769	270 346	174 638	95 708
1991	1 236 900	631 515	605 385	217 141	106 424	110 717
1992	1 291 880	702 590	589 290	248 453	118 140	130 313
1993 a	1 375 524	842 648	532 876	193 467	102 320	91 147
1994	1 466 823	848 142	618 681	227 815	132 270	95 545
1995	1 532 084	787 473	744 611	233 011	140 634	92 377
1996	1 686 134	777 922	908 212	238 314	125 830	112 484
1997	1 698 001	736 090	961 911	237 706	134 304	103 402
1998	1 748 258	727 531	1 020 727	227 379	124 538	102 841
1999	1 786 623	648 146	1 138 477	185 905	110 983	74 922
2000	1 641 452	578 462	1 062 990	172 442	96 261	76 181
1999 Q1	460 496	167 581	292 915	53 369	30 894	22 475
1999 Q2	448 932	155 973	292 959	50 546	30 556	19 990
1999 Q3	407 787	177 606	230 181	36 198	22 962	13 236
1999 Q4	469 408	146 986	322 422	45 792	26 571	19 221
2000 Q1	494 311	179 401	314 910	49 972	24 666	25 306
2000 Q2	433 240	140 548	292 692	52 061	27 345	24 716
2000 Q3	335 106	145 558	189 548	29 249	18 588	10 661
2000 Q4	378 795	112 955	265 840	41 160	25 662	15 498
2001 Q1	387 100	160 646	226 454	51 623	31 952	19 671
2001 Q2	372 395	142 864	229 531	49 675	26 436	23 239
2000 Jan	146 990	50 747	96 243	13 222	6 104	7 118
2000 Feb	162 164	66 591	95 573	17 166	8 534	8 632
2000 Mar	185 157	62 063	123 094	19 584	10 028	9 556
2000 Apr	124 971	38 011	86 960	15 766	7 763	8 003
2000 May	152 008	46 917	105 091	17 170	8 151	9 019
2000 Jun	156 261	55 620	100 641	19 125	11 431	7 694
2000 Jul	126 372	55 823	70 549	13 372	8 342	5 030
2000 Aug	74 761	32 965	41 796	5 885	3 628	2 257
2000 Sep	133 973	56 770	77 203	9 992	6 618	3 374
2000 Oct	131 522	38 712	92 810	13 872	8 565	5 307
2000 Nov	150 716	47 115	103 601	16 189	10 418	5 771
2000 Dec	96 557	27 128	69 429	11 099	6 679	4 420
2001 Jan	128 921	50 675	78 246	17 580	11 315	6 265
2001 Feb	124 163	55 434	68 729	16 290	10 085	6 205
2001 Mar	134 016	54 537	79 479	17 753	10 552	7 201
2001 Apr	112 547	45 865	66 682	14 172	8 097	6 075
2001 May	127 176	46 614	80 562	15 563	8 418	7 145
2001 Jun	132 672	50 385	82 287	19 940	9 921	10 019
2001 Jul	114 878	50 943	63 935	15 044	6 660	8 384
2001 Aug	89 350	43 180	45 540	11 960	5 994	5 966
2001 Sep	131 562	58 000	73 562	17 332	8 611	8 721

Percentage change for latest three months on:

Previous three months	-9.8	12.6	-20.3	-12.7	-19.8	-4.0
Same period last year	0.2	10.3	-3.4	48.2	18.0	109.3

a - 5 week month or 14 week quarter or 53 week year

Source: Office for National Statistics