

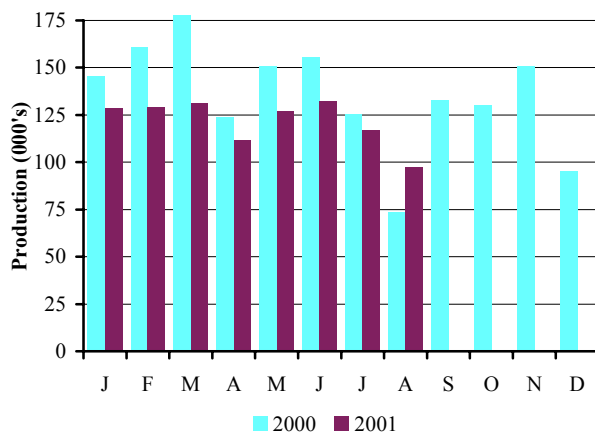
Car production up by 30 per cent in August

Production figures released today by the Office for National Statistics show that:

- **Car production in August 2001** **rose by 30 per cent**
- **Car production in YTD 2001** **fell by 13.9 per cent**

| | Aug 2000 | Aug 2001 | % chg. | YTD 2000 | YTD 2001 | % chg. |
|---------------|----------|----------|--------|-----------|----------|--------|
| Total | 74,761 | 97,164 | 30.0% | 1,128,684 | 971,537 | -13.9% |
| Home | 32,965 | 45,416 | 37.8% | 408,737 | 399,909 | -2.2% |
| % of total | 44.1% | 46.7% | | 36.2% | 41.2% | |
| Export | 41,796 | 51,748 | 23.8% | 719,947 | 571,628 | -20.6% |
| % of total | 55.9% | 53.3% | | 63.8% | 58.8% | |

Monthly car production 2000-2001



- Car production rose by 30 per cent in August to 97,164 units. This compares with 74,761 units in August 2000 and 94,410 units in August 1999. Year to date output fell 13.9 per cent.
- Production for the home market rose in August by 37.8 per cent to 45,416 units, and export production rose by 23.8 per cent to 51,748 units.

SMMT chief executive Christopher Macgowan said, 'The latest figures show car production beginning to return to 1999 levels after a long period of restructuring at many UK car plants. A raft of new British-built cars is starting to push output back up although this spectacular rise needs to be seen in the context of a traditionally weak month for car manufacturing. A clearer picture will emerge in the months to come.'

Press contacts:

Nigel Wonnacott: Tel: 020 7344 9219 e-mail: nwonnacott@smmt.co.uk
 Jon Stanley: Tel: 020 7344 9263 e-mail: jstanley@smmt.co.uk

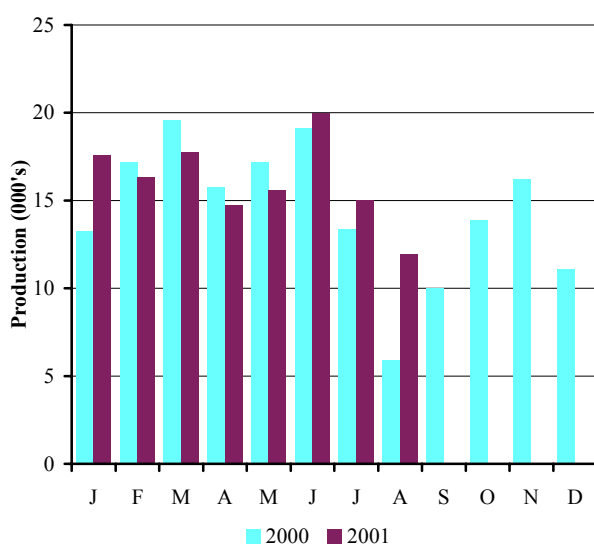
CV production doubles in August, led by vans

Production figures released today by the Office for National Statistics show that:

- **August 2001 CV production up 103.2 per cent**
- **2001 year to date CV production up five per cent**
- **UK CV production up for the third successive month.**

| | Aug 2000 | Aug 2001 | % chg. | YTD 2000 | YTD 2001 | % chg. |
|---------------|----------|----------|--------|----------|----------|--------|
| Total | 5,885 | 11,960 | 103.2 | 121,290 | 127,313 | 5.0 |
| Home | 3,628 | 5,994 | 65.2 | 63,981 | 70,807 | 10.7 |
| % of total | 61.6 | 50.1 | | 52.8 | 55.6 | |
| Export | 2,257 | 5,966 | 164.3 | 57,309 | 56,504 | -1.4 |
| % of total | 38.4 | 49.9 | | 47.2 | 44.4 | |

Monthly CV Production 2000-2001



- ONS figures show CV production grew by 103.2 per cent this month, to 11,960 vehicles compared to 5,885 in August 2000.
- Recent increases in export volume continue and were up by 164.3 per cent compared to August 2000, and production for the home market rose by 65.2 per cent compared to last year.

Commercial vehicle production up five per cent, year to date

UK commercial vehicle production grew five per cent for the year to date. Importantly, this was the third successive monthly rise this year. A 103 per cent rise this August, compared to last August, boosted the figures. But to put that figure in perspective, commercial vehicle production last August was 22.4 per cent down on the previous year, 1999.

Truck, bus and coach production down

The production growth was all up to vans. By comparison, August truck production dropped 25 per cent to 1,135 units and bus and coach production dipped 12 per cent to 140 units.

Van export prospects looking good

Commercial vehicle exports are down slightly for the year to date, but showed a spectacular 164 per cent increase for August, largely due to the General Motors plant at Luton. Overall, the prospects for UK commercial vehicle exports look good as output increases from the Ford plant in Southampton and the General Motors plant.

'More good news' says SMMT

'These figures help to confirm an upward trend and are more good news from the CV sector,' said SMMT chief executive Christopher Macgowan. 'We've now seen three successive months' growth in production. This is very good news and is in line with our expectations for this important sector. Although it is too early to predict the effects of the recent events in the US, we expect UK CV production will continue to rise, particularly at the lighter end of the spectrum.'

Press contact commercial vehicles:

Robin Dickeson Tel: 020 7344 9222 e-mail: rdickeson@smt.co.uk



| | PASSENGER CARS | | | COMMERCIAL VEHICLES | | |
|----------|----------------|-----------|------------|---------------------|----------|------------|
| | Total | For Home | For Export | Total | For Home | For Export |
| 1981 | 954 650 | 649 972 | 304 678 | 229 555 | 115 693 | 113 862 |
| 1982 | 887 679 | 661 814 | 225 865 | 268 798 | 176 288 | 92 510 |
| 1983 | 1 044 597 | 807 221 | 237 376 | 244 514 | 181 713 | 62 801 |
| 1984 | 908 906 | 716 693 | 192 213 | 224 825 | 175 017 | 49 808 |
| 1985 | 1 047 973 | 840 302 | 207 671 | 265 973 | 200 217 | 65 756 |
| 1986 | 1 018 962 | 831 406 | 187 556 | 228 685 | 178 909 | 49 776 |
| 1987 | 1 142 683 | 916 486 | 226 197 | 246 728 | 185 992 | 60 736 |
| 1988 a | 1 226 835 | 1 012 965 | 213 870 | 317 343 | 232 896 | 84 447 |
| 1989 | 1 299 082 | 1 018 353 | 280 729 | 326 590 | 231 087 | 95 503 |
| 1990 | 1 295 610 | 889 841 | 405 769 | 270 346 | 174 638 | 95 708 |
| 1991 | 1 236 900 | 631 515 | 605 385 | 217 141 | 106 424 | 110 717 |
| 1992 | 1 291 880 | 702 590 | 589 290 | 248 453 | 118 140 | 130 313 |
| 1993 a | 1 375 524 | 842 648 | 532 876 | 193 467 | 102 320 | 91 147 |
| 1994 | 1 466 823 | 848 142 | 618 681 | 227 815 | 132 270 | 95 545 |
| 1995 | 1 532 084 | 787 473 | 744 611 | 233 011 | 140 634 | 92 377 |
| 1996 | 1 686 134 | 777 922 | 908 212 | 238 314 | 125 830 | 112 484 |
| 1997 | 1 698 001 | 736 090 | 961 911 | 237 706 | 134 304 | 103 402 |
| 1998 | 1 748 258 | 727 531 | 1 020 727 | 227 379 | 124 538 | 102 841 |
| 1999 | 1 786 623 | 648 146 | 1 138 477 | 185 905 | 110 983 | 74 922 |
| 2000 | 1 641 452 | 578 462 | 1 062 990 | 172 442 | 96 261 | 76 181 |
| 1999 Q1 | 460 496 | 167 581 | 292 915 | 53 369 | 30 894 | 22 475 |
| 1999 Q2 | 448 932 | 155 973 | 292 959 | 50 546 | 30 556 | 19 990 |
| 1999 Q3 | 407 787 | 177 606 | 230 181 | 36 198 | 22 962 | 13 236 |
| 1999 Q4 | 469 408 | 146 986 | 322 422 | 45 792 | 26 571 | 19 221 |
| 2000 Q1 | 494 311 | 179 401 | 314 910 | 49 972 | 24 666 | 25 306 |
| 2000 Q2 | 433 240 | 140 548 | 292 692 | 52 061 | 27 345 | 24 716 |
| 2000 Q3 | 335 106 | 145 558 | 189 548 | 29 249 | 18 588 | 10 661 |
| 2000 Q4 | 378 795 | 112 955 | 265 840 | 41 160 | 25 662 | 15 498 |
| 2001 Q1 | 387 100 | 160 646 | 226 454 | 51 623 | 31 952 | 19 671 |
| 2001 Q2 | 372 395 | 142 864 | 229 531 | 49 675 | 26 436 | 23 239 |
| 2000 Jan | 146 990 | 50 747 | 96 243 | 13 222 | 6 104 | 7 118 |
| 2000 Feb | 162 164 | 66 591 | 95 573 | 17 166 | 8 534 | 8 632 |
| 2000 Mar | 185 157 | 62 063 | 123 094 | 19 584 | 10 028 | 9 556 |
| 2000 Apr | 124 971 | 38 011 | 86 960 | 15 766 | 7 763 | 8 003 |
| 2000 May | 152 008 | 46 917 | 105 091 | 17 170 | 8 151 | 9 019 |
| 2000 Jun | 156 261 | 55 620 | 100 641 | 19 125 | 11 431 | 7 694 |
| 2000 Jul | 126 372 | 55 823 | 70 549 | 13 372 | 8 342 | 5 030 |
| 2000 Aug | 74 761 | 32 965 | 41 796 | 5 885 | 3 628 | 2 257 |
| 2000 Sep | 133 973 | 56 770 | 77 203 | 9 992 | 6 618 | 3 374 |
| 2000 Oct | 131 522 | 38 712 | 92 810 | 13 872 | 8 565 | 5 307 |
| 2000 Nov | 150 716 | 47 115 | 103 601 | 16 189 | 10 418 | 5 771 |
| 2000 Dec | 96 557 | 27 128 | 69 429 | 11 099 | 6 679 | 4 420 |
| 2001 Jan | 128 921 | 50 675 | 78 246 | 17 580 | 11 315 | 6 265 |
| 2001 Feb | 124 163 | 55 434 | 68 729 | 16 290 | 10 085 | 6 205 |
| 2001 Mar | 134 016 | 54 537 | 79 479 | 17 753 | 10 552 | 7 201 |
| 2001 Apr | 112 547 | 45 865 | 66 682 | 14 172 | 8 097 | 6 075 |
| 2001 May | 127 176 | 46 614 | 80 562 | 15 563 | 8 418 | 7 145 |
| 2001 Jun | 132 672 | 50 385 | 82 287 | 19 940 | 9 921 | 10 019 |
| 2001 Jul | 114 878 | 50 943 | 63 935 | 14 055 | 6 427 | 7 628 |
| 2001 Aug | 97 164 | 45 416 | 51 748 | 11 960 | 5 994 | 5 966 |

Percentage change for latest three months on:

| | | | | | | |
|--------------------------|------|-----|-------|------|-------|------|
| Previous three months | -7.8 | 4.1 | -12.7 | -3.2 | -16.9 | 15.6 |
| Same 3 months a year ago | -3.5 | 5.8 | -7.1 | 19.7 | -3.9 | 57.6 |

a - 5 week month or 14 week quarter or 53 week year

Source: Office for National Statistics