

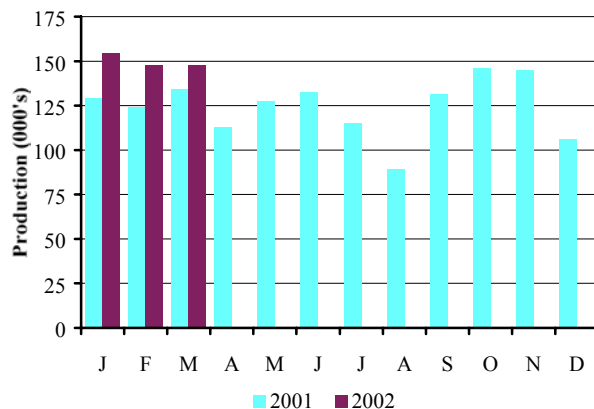
By George, car production is up again

Production figures released today by the Office for National Statistics show that:

- **Car production in March 2002** rose by **10.3 per cent**
- **Car production in YTD 2002** rose by **16.1 per cent**

Car Production						
	Mar 2001	Mar 2002	% chg.	YTD 2001	YTD 2002	% chg.
Total	134,016	147,820	10.3%	387,100	449,567	16.1%
Home	54,537	59,418	8.9%	160,646	194,576	21.1%
% of total	40.7%	40.2%		41.5%	43.3%	
Export	79,479	88,402	11.2%	226,454	254,991	12.6%
% of total	59.3%	59.8%		58.5%	56.7%	

Monthly Car Production 2001-2002



- March car production rose 10.3 per cent to 147,820 units. The first quarter saw output up 16.1 per cent on 2001 levels to 449,567 units.
- Production for the home market increased by 8.9 per cent in March to 59,418 units, while output for export was up by 11.2 per cent reaching 88,402 units.

Commenting on the provisional figures, SMMT chief executive Christopher Macgowan said, 'On St George's Day we should be rightly proud of figures which show car production in this country rising for the fourth month in a row.'

He added, 'But while total output for both the home and export markets is up we should remember that the vast majority of vehicles built here are exported to mainland Europe. If our industry is to continue to prosper, then its very own dragon - the strength of sterling - must be tackled. This is a real threat to jobs in a key manufacturing sector and we urge the government to end the uncertainty over Britain's entry to the Euro.'

Press contact

Nigel Wonnacott

Tel: 020 7344 9219 nwonnacott@smtt.co.uk

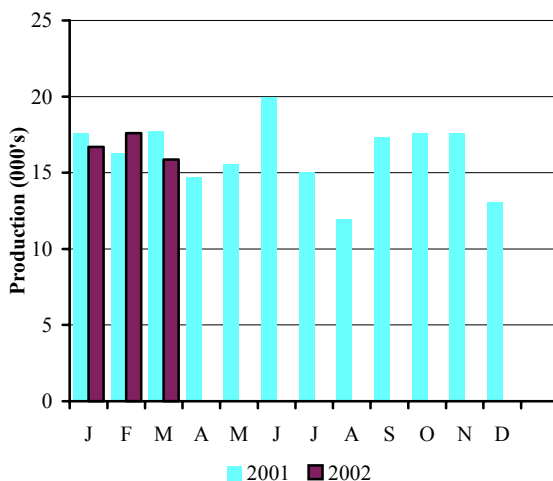
CV production down, but exports grow

- CV production for export in March rose by 32.1 per cent
- Total CV production in March fell by 10.8 per cent

Commercial Vehicle Production

	Mar 2001	Mar 2002	% chg.	YTD 2001	YTD 2002	% chg.
Total	17,753	15,843	-10.8%	51,623	49,929	-3.3%
Home	10,552	6,328	-40.0%	31,952	24,624	-22.9%
% of total	59.4%	39.9%		61.9%	49.3%	
Export	7,201	9,515	32.1%	19,671	25,305	28.6%
% of total	40.6%	60.1%		38.1%	50.7%	

Monthly CV Production 2001-2002



- Export production grew 32.1 per cent in March, the 10th consecutive month of growth.
- Overall, CV production was down 10.8 per cent to 15,853 units. Output for the home market dropped by 40 per cent.
- For the three months to March production was down by 3.3 per cent on 2001 levels.

SMMT chief executive Christopher Macgowan commented, 'Commercial vehicle production dipped a little in March, but exports remain strong - up by 32 per cent. We still expect annual CV production to top last year's total of 192,873 units.'

March commercial vehicle production down by 10.8 per cent

March's CV output fell by 10.8 per cent. This largely reflects structural changes at a number of UK plants, in particular Ford's Dagenham plant where the production of Fiesta and Courier vans have ceased.

Ford light van production is now based in Turkey, with medium vans built in Southampton and Genk. The Southampton plant builds front-wheel drive Transits with rear-wheel drive models built at Genk.

Ellesmere Port, the home of production for the Vauxhall Astra van, is now operating as a flexi-plant, building the new Vectra prior its June launch. Astra van production volumes will start to grow again once the car launch process is complete.

Production of the joint Renault/GM vans at Luton is now very nearly at full capacity, adding 6,593 units to the total for the month.

The 60 per cent drop in Ford's UK van production and the 57 per cent drop in Astra van production at Ellesmere Port are reflected in the lower March CV production figures. Peugeot CV production at Ryton also dropped 57 per cent in March.

Production at Leyland Trucks, now the UK's only volume truck plant, and Land Rover remained firm.

The small overall drop in March also reflects structural changes at two UK truck plants, ERF and Seddon Atkinson. Overall, CV production volumes should be balanced toward the end of the year as Vauxhall van production increases at Ellesmere Port.

Production for export up 32.2 per cent

This was the 10th consecutive month of CV export growth. This follows the trend for UK commercial vehicle plants to build for specific sectors of the European market.

Production of the joint Renault/GM van is mainly for export - now with Renault, Vauxhall, Opel and Nissan badges - and remains the major contributor to the growth in this market.

Truck production should continue to grow, particularly around the 7.5 tonne range, driven by the successful launch of the new DAF LF range, built at Leyland for Europe.

March home production down by 40 per cent

Production for the home market declined for the sixth consecutive month, down by 40 per cent, reflecting the low levels of production at Ford, GM Vauxhall and Peugeot this month.

Robin Dickeson

press contact:
Tel: 020 7344 9222 rdickeson@smt.co.uk

	PASSENGER CARS			COMMERCIAL VEHICLES		
	Total (GKAJ)	For Home	For Export (GKAK)	Total (GKDF)	For Home	For Export (GKDG)
1991	1 236 900	631 515	605 385	217 141	106 424	110 717
1992	1 291 880	702 590	589 290	248 453	118 140	130 313
1993 a	1 375 524	842 648	532 876	193 467	102 320	91 147
1994	1 466 823	848 142	618 681	227 815	132 270	95 545
1995	1 532 084	787 473	744 611	233 011	140 634	92 377
1996	1 686 134	777 922	908 212	238 314	125 830	112 484
1997	1 698 001	736 090	961 911	237 706	134 304	103 402
1998	1 748 258	727 531	1 020 727	227 379	124 538	102 841
1999	1 786 623	648 146	1 138 477	185 905	110 983	74 922
2000	1 641 452	578 462	1 062 990	172 442	96 261	76 181
1999 Q1	460 496	167 581	292 915	53 369	30 894	22 475
1999 Q2	448 932	155 973	292 959	50 546	30 556	19 990
1999 Q3	407 787	177 606	230 181	36 198	22 962	13 236
1999 Q4	469 408	146 986	322 422	45 792	26 571	19 221
2000 Q1	494 311	179 401	314 910	49 972	24 666	25 306
2000 Q2	433 240	140 548	292 692	52 061	27 345	24 716
2000 Q3	335 106	145 558	189 548	29 249	18 588	10 661
2000 Q4	378 795	112 955	265 840	41 160	25 662	15 498
2001 Q1	387 100	160 646	226 454	51 623	31 952	19 671
2001 Q2	372 395	142 864	229 531	49 675	26 436	23 239
2000 Jan	146 990	50 747	96 243	13 222	6 104	7 118
2000 Feb	162 164	66 591	95 573	17 166	8 534	8 632
2000 Mar	185 157	62 063	123 094	19 584	10 028	9 556
2000 Apr	124 971	38 011	86 960	15 766	7 763	8 003
2000 May	152 008	46 917	105 091	17 170	8 151	9 019
2000 Jun	156 261	55 620	100 641	19 125	11 431	7 694
2000 Jul	126 372	55 823	70 549	13 372	8 342	5 030
2000 Aug	74 761	32 965	41 796	5 885	3 628	2 257
2000 Sep	133 973	56 770	77 203	9 992	6 618	3 374
2000 Oct	131 522	38 712	92 810	13 872	8 565	5 307
2000 Nov	150 716	47 115	103 601	16 189	10 418	5 771
2000 Dec	96 557	27 128	69 429	11 099	6 679	4 420
2001 Jan	128 921	50 675	78 246	17 580	11 315	6 265
2001 Feb	124 163	55 434	68 729	16 290	10 085	6 205
2001 Mar	134 016	54 537	79 479	17 753	10 552	7 201
2001 Apr	112 547	45 865	66 682	14 172	8 097	6 075
2001 May	127 176	46 614	80 562	15 563	8 418	7 145
2001 Jun	132 672	50 385	82 287	19 940	9 921	10 019
2001 Jul	114 878	50 943	63 935	15 044	6 660	8 384
2001 Aug	89 350	43 180	45 540	11 960	5 994	5 966
2001 Sep	131 562	58 000	73 562	17 332	8 611	8 721
2001 Oct	145 984	53 206	92 778	17 607	6 697	10 910
2001 Nov	144 989	51 841	93 148	17 588	6 051	11 537
2001 Dec	106 107	36 801	69 306	13 033	4 486	8 547
2002 Jan	154 368	69 454	84 914	16 697	6 277	10 420
2002 Feb	147 379	65 704	81 675	17 357	8 243	9 114
2002 Mar	147 820	59 418	88 402	15 843	6 328	9 515

Percentage change for latest three months on:

Previous three months	13.2	37.2	-0.1	3.5	21.0	-6.3
Same period last year	16.1	21.1	12.6	-3.3	-34.8	47.7

a - 5 week month or 14 week quarter or 53 week year

Source: Office for National Statistics

