

Production growth is in vans

Production figures released today by the Office for National Statistics show that:

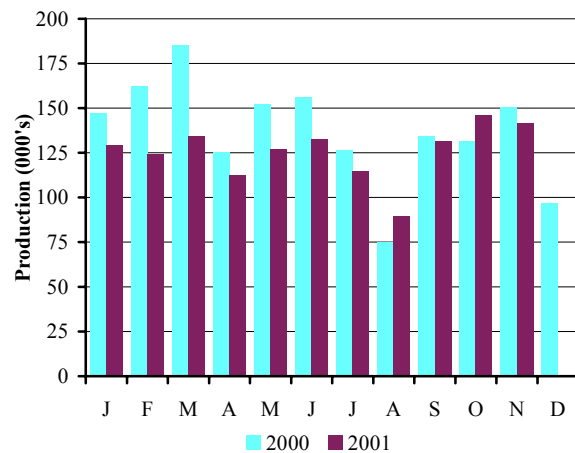
- ▲ **Car production in November 2001** fell by **6.3 per cent**
- ▲ **Car production in YTD 2001** fell by **10.5 per cent**

- ▼ **CV production in November 2001** rose by **7.6 per cent**
- ▼ **CV production in YTD 2001** rose **11.4 by per cent**

Car production

	Nov 2000	Nov 2001	% chg.	YTD 2000	YTD 2001	% chg.
Total	150,716	141,287	-6.3%	1,544,895	1,382,556	-10.5%
Home	47,115	45,939	-2.5%	551,334	555,408	0.7%
% of total	31.3%	32.5%		35.7%	40.2%	
Export	103,601	95,348	-8.0%	993,561	827,148	-16.7%
% of total	68.7%	67.5%		64.3%	59.8%	

Monthly Car Production 2000-2001



- Car production in November fell by 6.3 per cent to 141,287 units. Over the year-to-date, production was down 10.6 per cent to 1,382,556 units.
- Output for both home and export markets declined in November, but YTD home output remains up.

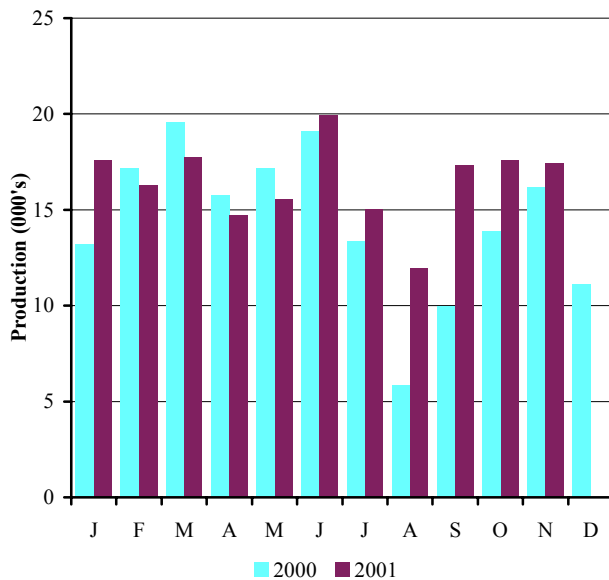
Commenting on the latest production figures, SMMT chief executive Christopher Macgowan said, 'Although November saw a modest decline in car production, the good news is that the CV sector continues to report strong growth as it has throughout this year. One of the reasons for this is the changing face of production at Luton, where output has shifted from cars to vans. It's a similar situation at Dagenham where car manufacturing is being replaced by Ford's world centre for diesel engine production.'

CV Production

	Nov 2000	Nov 2001	% chg.	YTD 2000	YTD 2001	% chg.
Total	16,189	17,426	7.6%	161,343	179,678	11.4%
Home	10,418	6,050	-41.9%	89,582	92,163	2.9%
% of total	64.4%	34.7%		55.5%	51.3%	
Export	5,771	11,376	97.1%	71,761	87,515	22.0%
% of total	35.6%	65.3%		44.5%	48.7%	

- Provisional figures from the Office for National Statistics show CV production up 7.6 per cent last month to 17,426 vehicles compared with 16,189 in November 2000.

Monthly CV Production 2000-2001



- Exports grew by almost 100 per cent in November, the sixth consecutive month of growth.
- Output for the home market declined for the second consecutive month, down by almost 42 per cent.
- CV output is up by 11.4 per cent over the first 11 months of the year, to 179,678 units.

Provisional data released today show another excellent month for commercial vehicle production. 'Six straight months of CV production growth is really good news for the UK', said SMMT chief executive Christopher Macgowan. 'And we're confident that UK commercial vehicle production will keep growing, backed by increasing demand here and on the continent.'

Year to date commercial vehicle production up 11.4 per cent

UK commercial vehicle production is up by 11.4 per cent for the year-to-date. Once again, the growth has been clearly led by the 2.5 to 3.5 tonne heavy van sector, with light and medium trucks between 3.5 and 15 tonnes also doing well. The underlying trend is very positive and the SMMT expects growth to continue as UK van plants continue to increase their output to support Europe-wide sales.

November 2001 commercial vehicle production remains buoyant

November's CV output continued to rise, although at 7.6 per cent, growth returned to the single digit rates seen before August. Growth last month was largely due to expansion at the GM Luton van plant. This balanced declining output ahead of the closure of car and van assembly at Ford's Dagenham site. GM car-derived van output was also lower last month compared to November 2000. Elsewhere output volumes are generally up or steady. With just December's contribution left, total annual production volume is expected to top 195,000 vehicles.

Press contacts:

Cars - Nigel Wonnacott	Tel: 020 7344 9219	nwonnacott@smt.co.uk
Jon Stanley	Tel: 020 7344 9263	jstanley@smt.co.uk
CVs - Robin Dickeson	Tel: 020 7344 9222	rdickeson@smt.co.uk

	PASSENGER CARS			COMMERCIAL VEHICLES		
	Total (GKAJ)	For Home	For Export (GKAK)	Total (GKDF)	For Home	For Export (GKDG)
1986	1 018 962	831 406	187 556	228 685	178 909	49 776
1987	1 142 683	916 486	226 197	246 728	185 992	60 736
1988 a	1 226 835	1 012 965	213 870	317 343	232 896	84 447
1989	1 299 082	1 018 353	280 729	326 590	231 087	95 503
1990	1 295 610	889 841	405 769	270 346	174 638	95 708
1991	1 236 900	631 515	605 385	217 141	106 424	110 717
1992	1 291 880	702 590	589 290	248 453	118 140	130 313
1993 a	1 375 524	842 648	532 876	193 467	102 320	91 147
1994	1 466 823	848 142	618 681	227 815	132 270	95 545
1995	1 532 084	787 473	744 611	233 011	140 634	92 377
1996	1 686 134	777 922	908 212	238 314	125 830	112 484
1997	1 698 001	736 090	961 911	237 706	134 304	103 402
1998	1 748 258	727 531	1 020 727	227 379	124 538	102 841
1999	1 786 623	648 146	1 138 477	185 905	110 983	74 922
2000	1 641 452	578 462	1 062 990	172 442	96 261	76 181
1999 Q1	460 496	167 581	292 915	53 369	30 894	22 475
1999 Q2	448 932	155 973	292 959	50 546	30 556	19 990
1999 Q3	407 787	177 606	230 181	36 198	22 962	13 236
1999 Q4	469 408	146 986	322 422	45 792	26 571	19 221
2000 Q1	494 311	179 401	314 910	49 972	24 666	25 306
2000 Q2	433 240	140 548	292 692	52 061	27 345	24 716
2000 Q3	335 106	145 558	189 548	29 249	18 588	10 661
2000 Q4	378 795	112 955	265 840	41 160	25 662	15 498
2001 Q1	387 100	160 646	226 454	51 623	31 952	19 671
2001 Q2	372 395	142 864	229 531	49 675	26 436	23 239
2000 Jan	146 990	50 747	96 243	13 222	6 104	7 118
2000 Feb	162 164	66 591	95 573	17 166	8 534	8 632
2000 Mar	185 157	62 063	123 094	19 584	10 028	9 556
2000 Apr	124 971	38 011	86 960	15 766	7 763	8 003
2000 May	152 008	46 917	105 091	17 170	8 151	9 019
2000 Jun	156 261	55 620	100 641	19 125	11 431	7 694
2000 Jul	126 372	55 823	70 549	13 372	8 342	5 030
2000 Aug	74 761	32 965	41 796	5 885	3 628	2 257
2000 Sep	133 973	56 770	77 203	9 992	6 618	3 374
2000 Oct	131 522	38 712	92 810	13 872	8 565	5 307
2000 Nov	150 716	47 115	103 601	16 189	10 418	5 771
2000 Dec	96 557	27 128	69 429	11 099	6 679	4 420
2001 Jan	128 921	50 675	78 246	17 580	11 315	6 265
2001 Feb	124 163	55 434	68 729	16 290	10 085	6 205
2001 Mar	134 016	54 537	79 479	17 753	10 552	7 201
2001 Apr	112 547	45 865	66 682	14 172	8 097	6 075
2001 May	127 176	46 614	80 562	15 563	8 418	7 145
2001 Jun	132 672	50 385	82 287	19 940	9 921	10 019
2001 Jul	114 878	50 943	63 935	15 044	6 660	8 384
2001 Aug	89 350	43 180	45 540	11 960	5 994	5 966
2001 Sep	131 562	58 000	73 562	17 332	8 611	8 721
2001 Oct	145 984	53 206	92 778	17 607	6 697	10 910
2001 Nov	141 287	45 939	95 348	17 426	6 050	11 376

Percentage change for latest three months on:

Previous three months	24.3	2.8	36.5	13.9	-5.0	31.3
Same period last year	0.6	10.2	-4.4	30.7	-14.4	114.6

a - 5 week month or 14 week quarter or 53 week year



Source: Office for National Statistics