

Car and truck makers report rise in October output

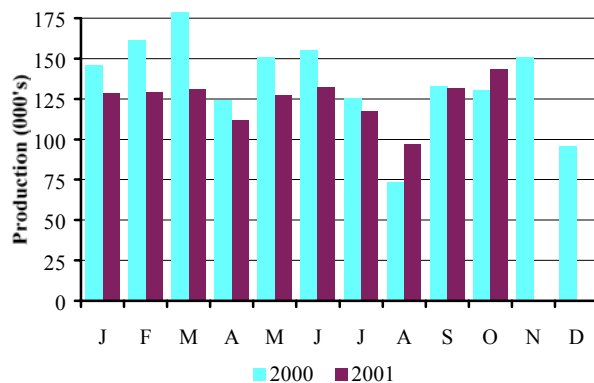
Production figures released today by the Office for National Statistics show that:

- **Car production in October 2001** rose by **9.2 per cent**
- **Car production for the home market** rose by **32 per cent**
-

Car production

	Oct 2000	Oct 2001	% chg.	YTD 2000	YTD 2001	% chg.
Total	131,522	143,619	9.2%	1,394,179	1,238,904	-11.1%
Home	38,712	51,081	32.0%	504,219	507,344	0.6%
% of total	29.4%	35.6%		36.2%	41.0%	
Export	92,810	92,538	-0.3%	889,960	731,560	-17.8%
% of total	70.6%	64.4%		63.8%	59.0%	

Monthly Car Production 2000-2001



- Car production in October rose by 9.2 per cent to 143,619 units. In the year-to-date, production dipped 11.1 per cent to 1,238,904 units.
- Production for the home market rose in October by 32 per cent to 51,081 units, while output for export remained steady at 92,538 units.

Commenting on car production in October, SMMT chief executive Christopher Macgowan said, 'These latest figures paint an optimistic picture. While production for export remained steady, output for the home market grew by nearly 10 per cent last month. This is only to be expected in the face of economic uncertainty abroad, while UK demand for new cars remains strong. Consumer confidence is high and demand reflects both the desirability and diversity of new models coming off British production lines'.

October CV production up by more than 40 per cent

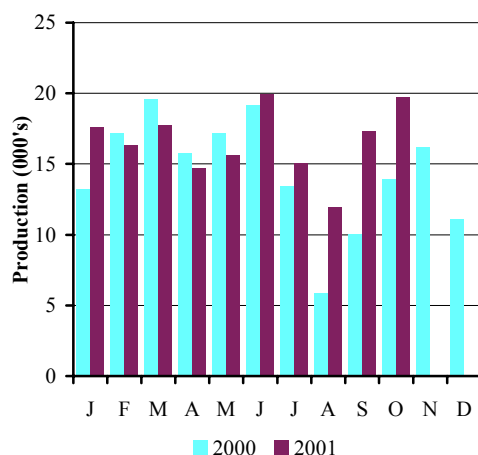
- CV production in October 2001 rose by 42.1 per cent
- CV production in YTD 2001 rose 13.2 by per cent

CV production

	October 2000	October 2001	% change	YTD 2000	YTD 2001	% change
Total	13,872	19,709	42.1%	145,154	164,354	13.2%
Home	8,565	8,894	3.8%	79,164	88,312	11.6%
% total	61.7%	45.1%		54.5%	53.7%	
Export	5,307	10,815	103.8%	65,990	76,042	15.2%
% total	38.3%	54.9%		45.5%	46.31%	

Christopher Macgowan, SMMT chief executive said 'We've now seen five straight months CV production growth, backed by solid demand both here and in the rest of Europe. We're confident that both demand and production will continue growing.'

Monthly CV Production 2000-2001



- Growth again firmly anchored to the heavier end of light vans.
- Fifth consecutive month of year on year growth in output. Increase is very strong this month, due in large part to the IBC contribution.
- HCV output up by 11.5% in October. Production of Leyland trucks up by 14.5 per cent for the month.

Press contacts

Nigel Wonnacott (cars)
Robin Dickeson (CVs)

020 7344 9219
020 7344 9222

nwonnacott@smmt.co.uk
rdickeson@smmt.co.uk

	PASSENGER CARS			COMMERCIAL VEHICLES		
	Total	For Home	For Export	Total	For Home	For Export
	(GKAJ)		(GKAK)	(GKDF)		(GKDG)
1986	1 018 962	831 406	187 556	228 685	178 909	49 776
1987	1 142 683	916 486	226 197	246 728	185 992	60 736
1988 a	1 226 835	1 012 965	213 870	317 343	232 896	84 447
1989	1 299 082	1 018 353	280 729	326 590	231 087	95 503
1990	1 295 610	889 841	405 769	270 346	174 638	95 708
1991	1 236 900	631 515	605 385	217 141	106 424	110 717
1992	1 291 880	702 590	589 290	248 453	118 140	130 313
1993 a	1 375 524	842 648	532 876	193 467	102 320	91 147
1994	1 466 823	848 142	618 681	227 815	132 270	95 545
1995	1 532 084	787 473	744 611	233 011	140 634	92 377
1996	1 686 134	777 922	908 212	238 314	125 830	112 484
1997	1 698 001	736 090	961 911	237 706	134 304	103 402
1998	1 748 258	727 531	1 020 727	227 379	124 538	102 841
1999	1 786 623	648 146	1 138 477	185 905	110 983	74 922
2000	1 641 452	578 462	1 062 990	172 442	96 261	76 181
1999 Q1	460 496	167 581	292 915	53 369	30 894	22 475
1999 Q2	448 932	155 973	292 959	50 546	30 556	19 990
1999 Q3	407 787	177 606	230 181	36 198	22 962	13 236
1999 Q4	469 408	146 986	322 422	45 792	26 571	19 221
2000 Q1	494 311	179 401	314 910	49 972	24 666	25 306
2000 Q2	433 240	140 548	292 692	52 061	27 345	24 716
2000 Q3	335 106	145 558	189 548	29 249	18 588	10 661
2000 Q4	378 795	112 955	265 840	41 160	25 662	15 498
2001 Q1	387 100	160 646	226 454	51 623	31 952	19 671
2001 Q2	372 395	142 864	229 531	49 675	26 436	23 239
2000 Jan	146 990	50 747	96 243	13 222	6 104	7 118
2000 Feb	162 164	66 591	95 573	17 166	8 534	8 632
2000 Mar	185 157	62 063	123 094	19 584	10 028	9 556
2000 Apr	124 971	38 011	86 960	15 766	7 763	8 003
2000 May	152 008	46 917	105 091	17 170	8 151	9 019
2000 Jun	156 261	55 620	100 641	19 125	11 431	7 694
2000 Jul	126 372	55 823	70 549	13 372	8 342	5 030
2000 Aug	74 761	32 965	41 796	5 885	3 628	2 257
2000 Sep	133 973	56 770	77 203	9 992	6 618	3 374
2000 Oct	131 522	38 712	92 810	13 872	8 565	5 307
2000 Nov	150 716	47 115	103 601	16 189	10 418	5 771
2000 Dec	96 557	27 128	69 429	11 099	6 679	4 420
2001 Jan	128 921	50 675	78 246	17 580	11 315	6 265
2001 Feb	124 163	55 434	68 729	16 290	10 085	6 205
2001 Mar	134 016	54 537	79 479	17 753	10 552	7 201
2001 Apr	112 547	45 865	66 682	14 172	8 097	6 075
2001 May	127 176	46 614	80 562	15 563	8 418	7 145
2001 Jun	132 672	50 385	82 287	19 940	9 921	10 019
2001 Jul	114 878	50 943	63 935	15 044	6 660	8 384
2001 Aug	89 350	43 180	45 540	11 960	5 994	5 966
2001 Sep	131 562	58 000	73 562	17 332	8 611	8 721
2001 Oct	143 619	51 081	92 538	19 709	8 894	10 815

Percentage change for latest three months on:

Previous three months	-2.7	16.3	-6.7	-1.1	-4.1	2.9
Same period last year	7.1	29.1	-0.1	64.7	30.4	133.2

Source: Office for National Statistics