

CV production rises but car output falls in June

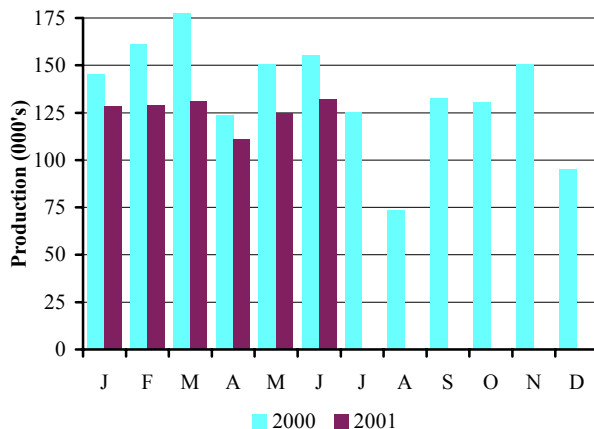
Production figures released today by the Office for National Statistics show that:

- ▲ **Car production in June 2001** fell by **15.3 per cent**
- ▲ **Car production YTD 2001** is down **18.2 per cent**

Car production

	Jun 2000	Jun 2001	% chg.	YTD 2000	YTD 2001	% chg.
Total	156,261	132,348	-15.3%	927,551	758,972	-18.2%
Home	55,621	50,302	-9.6%	319,955	303,252	-5.2%
% of total	35.6%	38.0%		34.5%	40.0%	
Export	100,640	82,046	-18.5%	607,596	455,720	-25.0%
% of total	64.4%	62.0%		65.5%	60.0%	

Monthly Car Production 2000-2001



- Total car production in June fell by 15.3 per cent to 132,348 according to provisional figures released today by the Office of National Statistics.
- Production for the home market fell by 9.6 per per cent while output for export was down 18.5 per cent.

SMMT chief executive Christopher Macgowan said, 'The drop in car production over the first six months of the year has been disappointing but we need to guard against long-term pessimism. This is still a very exciting time for manufacturers and car buyers alike with a host of innovative British-built products like the Jaguar X-Type, MINI and MG sports' cars coming on line, after a long period of restructuring.

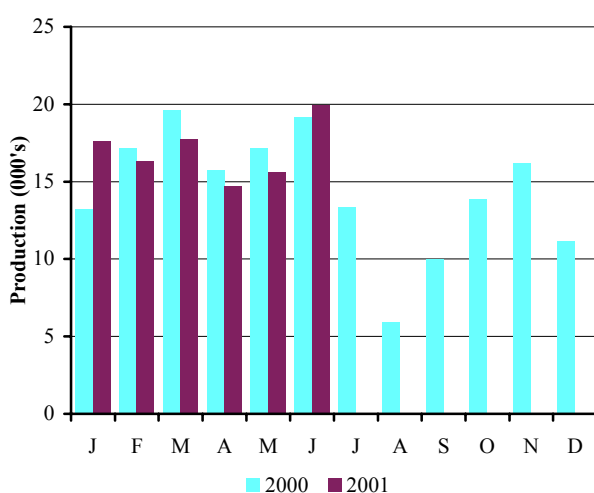
He added, 'We should also remind ourselves that Nissan and Toyota's UK plants are the envy of Europe, topping the productivity table, and Honda has just announced it is to start building vehicles at its second factory in Swindon. This speaks volumes about the UK's position as a global centre of car production and the future looks very bright indeed.'

- **Total CV production in June 2001** rose by 4.3 per cent
- **CV Production for export in June 2001** soared 30.3 per cent
- **Total CV production YTD** dipped 0.7 per cent

Commercial vehicle production

	Jun 2000	Jun 2001	% chg.	YTD 2000	YTD 2001	% chg.
Total	19,125	19,940	4.3	101,977	101,297	-0.7
Home	11,431	9,914	-13.3	51,955	58,388	12.4
% of total	59.8	51.8		50.9	57.6	
Export	7,694	10,026	30.3	50,022	42,909	-14.2
% of total	40.2	52.4		49.1	42.4	

Monthly CV Production 2000-2001



- Total CV production grew by 4.3 per cent, to 19,940 vehicles in June 2001.
- Recent declines in export volume were transformed by a 30.3 increase in June 2001, while production for the home market fell by 13.3 per cent compared to June last year.

Total production output for the first half of this year was down by 0.7 per cent compared to the first six months of 2000. Changes in export and home market allocation are down by 14.2 per cent and up by 12.4 per cent respectively.

Commenting on the June figures SMMT Chief Executive, Christopher Macgowan said, 'It appears that we have now reached the forecasted turning point for the CV market and the outlook for the remainder of the year is positive. It's encouraging to see export volumes rise in such dramatic fashion and this looks set to continue with increased demand for UK assembled products despite continuing pressure from the strong pound'.

Press contacts

Nigel Wonnacott Tel: 020 7344 9219 E-mail: nwonnacott@smmt.co.uk (CARS)
 Jon Stanley Tel: 020 7344 9263 E-mail: jstanley@smmt.co.uk (CV)

	PASSENGER CARS			COMMERCIAL VEHICLES		
	Total	For Home Market	For Export	Total	For Home Market	For Export
	GKAJ		GKAK	GKDF		GKDG
1981	954 650	649 972	304 678	229 555	115 693	113 862
1982	887 679	661 814	225 865	268 798	176 288	92 510
1983	1 044 597	807 221	237 376	244 514	181 713	62 801
1984	908 906	716 693	192 213	224 825	175 017	49 808
1985	1 047 973	840 302	207 671	265 973	200 217	65 756
1986	1 018 962	831 406	187 556	228 685	178 909	49 776
1987	1 142 683	916 486	226 197	246 728	185 992	60 736
1988 a	1 226 835	1 012 965	213 870	317 343	232 896	84 447
1989	1 299 082	1 018 353	280 729	326 590	231 087	95 503
1990	1 295 610	889 841	405 769	270 346	174 638	95 708
1991	1 236 900	631 515	605 385	217 141	106 424	110 717
1992	1 291 880	702 590	589 290	248 453	118 140	130 313
1993 a	1 375 524	842 648	532 876	193 467	102 320	91 147
1994	1 466 823	848 142	618 681	227 815	132 270	95 545
1995	1 532 084	787 473	744 611	233 011	140 634	92 377
1996	1 686 134	777 922	908 212	238 314	125 830	112 484
1997	1 698 001	736 090	961 911	237 706	134 304	103 402
1998	1 748 258	727 531	1 020 727	227 379	124 538	102 841
1999	1 786 623	648 146	1 138 477	185 905	110 983	74 922
2000	1 629 609	576 950	1 052 659	184 165	96 805	87 360
1999 Q1	460 496	167 581	292 915	53 369	30 894	22 475
1999 Q2	448 932	155 973	292 959	50 546	30 556	19 990
1999 Q3	407 787	177 606	230 181	36 198	22 962	13 236
1999 Q4	469 408	146 986	322 422	45 792	26 571	19 221
2000 Q1	494 311	179 401	314 910	49 956	24 650	25 306
2000 Q2	433 240	140 554	292 686	52 021	27 305	24 716
2000 Q3	335 106	145 524	189 582	28 326	17 946	10 380
2000 Q4	378 795	112 955	265 840	41 160	25 662	15 498
2001 Q1	387 100	160 646	226 454	51 623	31 959	19 664
2001 Q2	371 872	142 606	229 266	49 674	26 429	23 245
2000 Jan	146 990	50 747	96 243	13 210	6 092	7 118
2000 Feb	162 164	66 591	95 573	17 166	8 534	8 632
2000 Mar	185 157	62 063	123 094	19 580	10 024	9 556
2000 Apr	124 971	38 011	86 960	15 761	7 758	8 003
2000 May	152 008	46 922	105 086	17 135	8 116	9 019
2000 Jun	156 261	55 621	100 640	19 125	11 431	7 694
2000 Jul	126 372	55 823	70 549	13 372	8 342	5 030
2000 Aug	74 761	32 965	41 796	5 885	3 628	2 257
2000 Sep	133 973	56 736	77 237	9 069	5 976	3 093
2000 Oct	131 522	38 712	92 810	13 872	8 565	5 307
2000 Nov	150 716	47 115	103 601	16 189	10 418	5 771
2000 Dec	96 557	27 128	69 429	11 099	6 679	4 420
2001 Jan	128 921	50 675	78 246	17 580	11 322	6 258
2001 Feb	124 163	55 434	68 729	16 290	10 085	6 205
2001 Mar	134 016	54 537	79 479	17 753	10 552	7 201
2001 Apr	112 538	45 857	66 681	14 172	8 097	6 075
2001 May	126 986	46 447	80 539	15 562	8 418	7 144
2001 Jun	132 348	50 302	82 046	19 940	9 914	10 026

Percentage change latest three months on:

i. Previous three months	-3.9	-11.2	1.2	-3.8	-17.3	18.2
ii. Same three months a year ago	-14.2	1.5	-21.7	-4.5	-3.2	-6.0

a - 5 week month or 14 week quarter or 53 week year

Source: Office for National Statistics

