

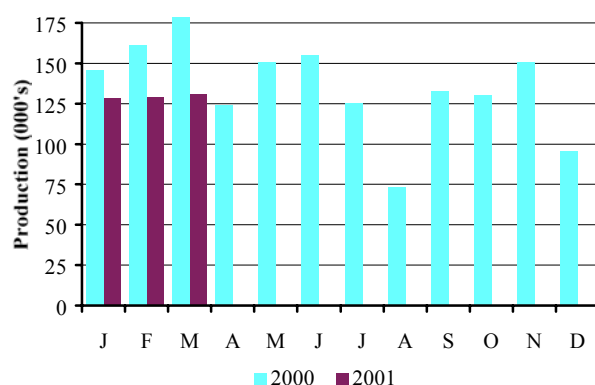
Car production falls in March

Production figures released today by the Office for National Statistics show that:

- ▲ Car production in March 2001 fell by 28.7 per cent
- ▲ Car production in YTD 2001 fell by 21.8 per cent
- ▲ CV production in March 2001 fell by 13.8 per cent
- ▲ CV production in YTD 2001 fell by 3.4 per cent

	Mar 2000	Mar 2001	% chg.	YTD 2000	YTD 2001	% chg.
Total	183,722	131,053	-28.7%	490,464	383,765	-21.8%
Home	61,970	53,596	-13.5%	179,070	159,643	-10.8%
% of total	33.7%	40.9%		36.5%	41.6%	
Export	121,752	77,457	-36.4%	311,394	224,122	-28.0%
% of total	66.3%	59.1%		63.5%	58.4%	

Monthly Car Production 2000-2001



- ONS provisional figures show that car production fell by 28.7 per cent in March, falling to 131,053 units.
- Output for the home and export markets fell by 13.5 per cent and 36.4 per cent respectively.

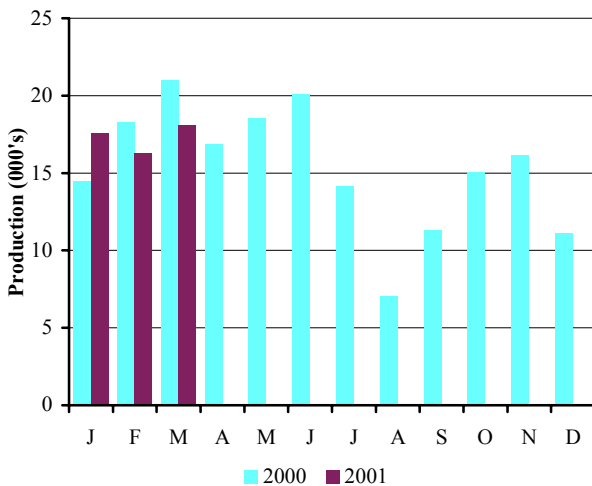
Commenting on the latest figures, SMMT chief executive Christopher Macgowan said 'As expected production output failed to top the very strong growth recorded this time last year. The March figures are still disappointing but we need to keep the temporary down turn in the sector's fortunes in context. Although production of several high volume models has been cut back, many plants are either gearing up for new models or are committed to raising output. This should be reflected in better news later this year and into next.'

Press contacts:

Nigel Wonnacott: Tel: 020 7344 9219 e-mail: nwonnacott@smmt.co.uk
 Jon Stanley: Tel: 020 7344 9263 e-mail: jstanley@smmt.co.uk

	Mar 2000	Mar 2001	% chg.	YTD 2000	YTD 2001	% chg.
Total	21,015	18,113	-13.8	53,803	51,983	-3.4
Home	10,117	10,982	8.5	24,981	32,389	29.7
% of total	48.1	52.3		46.4	62.3	
Export	10,898	7,131	-34.6	28,822	19,594	-32.0
% of total	51.9	33.9		53.6	37.7	

Monthly CV Production 2000-2001



- March commercial vehicle production at 18,113 units dropped 5.3 per cent on the corresponding period last year.
- More importantly the figure is only 4.6 per cent down on the long-term monthly average of 18,996.

Provisional estimates show that total CV production fell by 13.8 per cent in March compared to 21,015 in March 2000. Exports continue to fall, down by 34.6 per cent this month while production for the home market is up again this month, by 8.5 per cent compared to last year.

Figures for the first quarter of this year are down by 3.4 per cent compared to the same period last year. The quarterly figures for export and home production mirror the monthly figures with production for export down by 32 per cent and home production up by 29.7 per cent.

For the twelve months to March, total production is down by 2.1 per cent, production for export down 3.8 per cent and home production down by 0.8 per cent.

Vauxhall will soon to start volume production of the joint General Motors and Renault van project, expected to hit over 85,000 units a year. This and other UK manufacturing sites gearing up for increased and export based commercial vehicle production means

the outlook is really very good' said Christopher Macgowan, chief executive of the SMMT. 'Demand for trucks, for instance at Leyland with the new Daf LF range just entering production, remains healthy. I am confident that 2001 will be a good year for commercial vehicle production in the UK,' he continued.

Press contact:

Robin Dickeson Tel: 020 7344 9222 or e-mail: rdickeson@smmt.co.uk

	PASSENGER CARS			COMMERCIAL VEHICLES		
	Total	For Home Market	For Export	Total	For Home Market	For Export
	GKAJ		GKAK	GKDF		GKDG
1981	954 650	649 972	304 678	229 555	115 693	113 862
1982	887 679	661 814	225 865	268 798	176 288	92 510
1983	1 044 597	807 221	237 376	244 514	181 713	62 801
1984	908 906	716 693	192 213	224 825	175 017	49 808
1985	1 047 973	840 302	207 671	265 973	200 217	65 756
1986	1 018 962	831 406	187 556	228 685	178 909	49 776
1987	1 142 683	916 486	226 197	246 728	185 992	60 736
1988 a	1 226 835	1 012 965	213 870	317 343	232 896	84 447
1989	1 299 082	1 018 353	280 729	326 590	231 087	95 503
1990	1 295 610	889 841	405 769	270 346	174 638	95 708
1991	1 236 900	631 515	605 385	217 141	106 424	110 717
1992	1 291 880	702 590	589 290	248 453	118 140	130 313
1993 a	1 375 524	842 648	532 876	193 467	102 320	91 147
1994	1 466 823	848 142	618 681	227 815	132 270	95 545
1995	1 532 084	787 473	744 611	233 011	140 634	92 377
1996	1 686 134	777 922	908 212	238 314	125 830	112 484
1997	1 698 001	736 090	961 911	237 706	134 304	103 402
1998	1 748 258	727 531	1 020 727	227 379	124 538	102 841
1999	1 786 623	648 146	1 138 477	185 905	110 983	74 922
2000	1 629 609	576 950	1 052 659	184 165	96 805	87 360
1999 Q1	460 496	167 581	292 915	53 369	30 894	22 475
1999 Q2	448 932	155 973	292 959	50 546	30 556	19 990
1999 Q3	407 787	177 606	230 181	36 198	22 962	13 236
1999 Q4	469 408	146 986	322 422	45 792	26 571	19 221
2000 Q1	490 464	179 070	311 394	53 803	24 981	28 822
2000 Q2	429 742	140 333	289 409	55 519	27 524	27 995
2000 Q3	331 778	144 800	186 978	32 535	19 296	13 239
2000 Q4	377 614	112 734	264 880	42 312	24 984	17 328
2001 Q1	383 765	159 643	224 122	51 983	32 389	19 594
2000 Jan	145 732	50 605	95 127	14 468	6 234	8 234
2000 Feb	161 010	66 495	94 515	18 320	8 630	9 690
2000 Mar	183 722	61 970	121 752	21 015	10 117	10 898
2000 Apr	123 852	37 963	85 889	16 880	7 804	9 076
2000 May	150 627	46 841	103 786	18 516	8 197	10 319
2000 Jun	155 263	55 529	99 734	20 123	11 523	8 600
2000 Jul	125 552	55 627	69 925	14 162	8 508	5 654
2000 Aug	73 566	32 633	40 933	7 068	3 942	3 126
2000 Sep	132 660	56 540	76 120	11 305	6 846	4 459
2000 Oct	130 452	38 555	91 897	15 040	8 716	6 324
2000 Nov	150 666	47 072	103 594	16 173	9 589	6 584
2000 Dec	96 496	27 107	69 389	11 099	6 679	4 420
2001 Jan	128 742	50 654	78 088	17 580	11 322	6 258
2001 Feb	123 970	55 393	68 577	16 290	10 085	6 205
2001 Mar	131 053	53 596	77 457	18 113	10 982	7 131

Percentage change latest six months on:

i. Previous six months	-4.5	2.6	7.1	22.5	-10.5
ii. Same six months a year ago	-20.7	-16.5	-22.8	-5.3	11.3

a 5 week month or 14 week quarter or 53 week year

Source: Office for National Statistics