

## Car production falls in February - but the future's bright

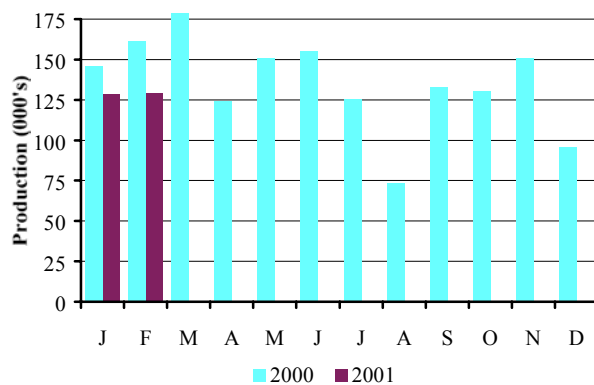
Production figures released today by the Office for National Statistics show that:

- ▲ **Car production in February 2001** fell by **19.8 per cent**
- ▲ **Car production in YTD 2001** fell by **16 per cent**
  
- ▲ **CV production in February 2001** fell by **17.5 per cent**
- ▲ **CV production in YTD 2001** fell by **0.3 per cent**

### Car production

	Feb 2000	Feb 2001	% chg.	YTD 2000	YTD 2001	% chg.
<b>Total</b>	161,010	129,099	-19.8%	306,742	257,697	-16.0%
<b>Home</b>	66,495	56,388	-15.2%	117,100	107,040	-8.6%
% of total	41.3%	43.7%		38.2%	41.5%	
<b>Export</b>	94,515	72,711	-23.1%	189,642	150,657	-20.6%
% of total	58.7%	56.3%		61.8%	58.5%	

### Monthly Car Production 2000-2001



- Output remained low in February 2001. Production fell by 19.8 per cent to 129,099 units compared to 161,010 in February 2000.
- Production for the home market continued to increase market share, accounting for almost 44 per cent of total output last month.

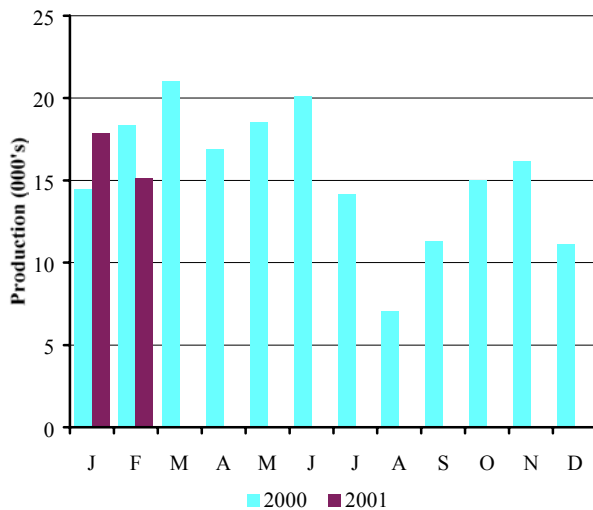
February car production volumes remained low as output continues to be affected by plant restructuring. Commenting on the figures, SMMT chief executive Christopher Macgowan said 'It would be wrong to view February's drop in car production as part of a slide in the fortunes of UK car manufacturing.'

'Although the latest figures appear disappointing, output is set to climb as many of the positive announcements made towards the end of last year, and new models waiting to

come on stream, are translated into manufacturing output. In the long term things are looking up', he added.

<b>Commercial vehicle production</b>						
	<b>Feb 2000</b>	<b>Feb 2001</b>	<b>% chg.</b>	<b>YTD 2000</b>	<b>YTD 2001</b>	<b>% chg.</b>
<b>Total</b>	18,320	15,108	-17.5%	32,788	32,688	-0.3%
<b>Home</b>	8,630	9,218	6.8%	14,864	20,540	38.2%
<b>% of total</b>	47.1%	61.0%		45.3%	62.8%	
<b>Export</b>	9,690	5,890	-39.2%	17,924	12,148	-32.2%
<b>% of total</b>	52.9%	39.0%		54.7%	37.2%	

### Monthly CV Production 2000-2001



- Provisional estimates show that total CV production fell by 17.5 per cent this month, to 15,108 vehicles compared to 18,320 in February 2000.
- Exports fell 39.2 per cent but production for the home market increased again this month, up by 6.8 per cent compared to last year.

Commenting on the figures, SMMT chief executive Christopher Macgowan said, 'After a surge in output last month, CV production dropped off in February. However, with a host of excellent products currently showing at the Commercial Vehicle Show in Birmingham, it is likely that demand for British built CVs and CV components will rise in the months ahead'.

**If you have any queries, please contact:**

**Nigel Wonnacott:      Tel: 020 7344 9219    e-mail: [nwonnacott@smmt.co.uk](mailto:nwonnacott@smmt.co.uk)**

	PASSENGER CARS			COMMERCIAL VEHICLES		
	Total	For Home Market	For Export	Total	For Home Market	For Export
	GKAJ		GKAK	GKDF		GKDG
1981	954 650	649 972	304 678	229 555	115 693	113 862
1982	887 679	661 814	225 865	268 798	176 288	92 510
1983	1 044 597	807 221	237 376	244 514	181 713	62 801
1984	908 906	716 693	192 213	224 825	175 017	49 808
1985	1 047 973	840 302	207 671	265 973	200 217	65 756
1986	1 018 962	831 406	187 556	228 685	178 909	49 776
1987	1 142 683	916 486	226 197	246 728	185 992	60 736
1988 a	1 226 835	1 012 965	213 870	317 343	232 896	84 447
1989	1 299 082	1 018 353	280 729	326 590	231 087	95 503
1990	1 295 610	889 841	405 769	270 346	174 638	95 708
1991	1 236 900	631 515	605 385	217 141	106 424	110 717
1992	1 291 880	702 590	589 290	248 453	118 140	130 313
1993 a	1 375 524	842 648	532 876	193 467	102 320	91 147
1994	1 466 823	848 142	618 681	227 815	132 270	95 545
1995	1 532 084	787 473	744 611	233 011	140 634	92 377
1996	1 686 134	777 922	908 212	238 314	125 830	112 484
1997	1 698 001	736 090	961 911	237 706	134 304	103 402
1998	1 748 258	727 531	1 020 727	227 379	124 538	102 841
1999	1 786 623	648 146	1 138 477	185 905	110 983	74 922
2000	1 629 609	576 950	1 052 659	184 165	96 805	87 360
1999 Q1	460 496	167 581	292 915	53 369	30 894	22 475
1999 Q2	448 932	155 973	292 959	50 546	30 556	19 990
1999 Q3	407 787	177 606	230 181	36 198	22 962	13 236
1999 Q4	469 408	146 986	322 422	45 792	26 571	19 221
2000 Q1	490 464	179 070	311 394	53 803	24 981	28 822
2000 Q2	429 742	140 333	289 409	55 519	27 524	27 995
2000 Q3	331 778	144 800	186 978	32 535	19 296	13 239
2000 Q4	377 625	112 747	264 878	42 308	25 004	17 304
2000 Jan	145 732	50 605	95 127	14 468	6 234	8 234
2000 Feb	161 010	66 495	94 515	18 320	8 630	9 690
2000 Mar	183 722	61 970	121 752	21 015	10 117	10 898
2000 Apr	123 852	37 963	85 889	16 880	7 804	9 076
2000 May	150 627	46 841	103 786	18 516	8 197	10 319
2000 Jun	155 263	55 529	99 734	20 123	11 523	8 600
2000 Jul	125 552	55 627	69 925	14 162	8 508	5 654
2000 Aug	73 566	32 633	40 933	7 068	3 942	3 126
2000 Sep	132 660	56 540	76 120	11 305	6 846	4 459
2000 Oct	130 452	38 555	91 897	15 040	8 716	6 324
2000 Nov	150 666	47 072	103 594	16 173	9 589	6 584
2000 Dec	96 496	27 107	69 389	11 099	6 679	4 420
2001 Jan	128 598	50 652	77 946	17 580	11 322	6 258
2001 Feb	129 099	56 388	72 711	15 108	9 218	5 890

Percentage change latest six months on:

i. Previous six months	-5.5	-4.9	-5.8	-11.7	4.5	-28.8
ii. Same six months a year ago	-18.6	-15.9	-20.1	-8.3	2.1	-20.8

a 5-week month or 14 week quarter or 53 week year

Source: Office for National Statistics