

## Car production on the rise in 2002

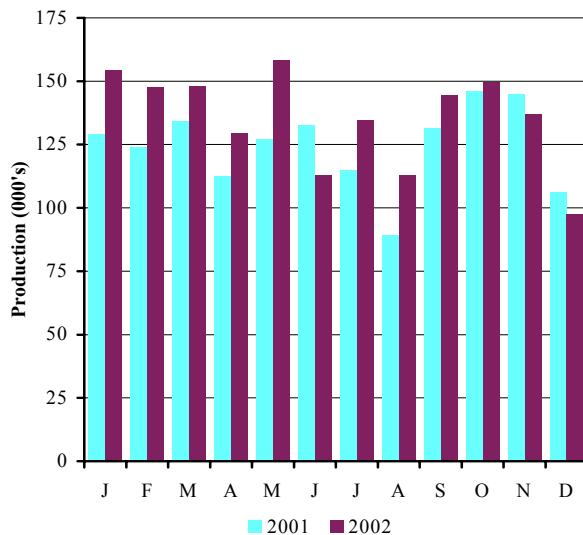
Production figures released today by the Office for National Statistics show that:

- ▲ **Total car output in 2002** was up **9.1 per cent**
- ▲ **Production for export in 2002** rose by **17.1 per cent**

### Car Production

	Dec 2001	Dec 2002	% chg.	Year 2001	Year 2002	% chg.
<b>Total</b>	106,107	97,467	-8.1%	1,492,365	1,628,020	9.1%
<b>Home</b>	36,801	26,276	-28.6%	598,111	581,212	-2.8%
<b>% of total</b>	34.7%	27.0%		40.1%	35.7%	
<b>Export</b>	69,306	71,191	2.7%	894,254	1,046,808	17.1%
<b>% of total</b>	65.3%	73.0%		59.9%	64.3%	

### Monthly Car Production 2001-2002



- Car production rose 9.1 per cent in 2002, to 1,628,020 units.
- The rise was fuelled by a 17.1 per cent jump in exports, representing more than 150,000 additional cars, compared to 2001.
- December output fell by 8.1 per cent reflecting a slowdown in output for the domestic market.

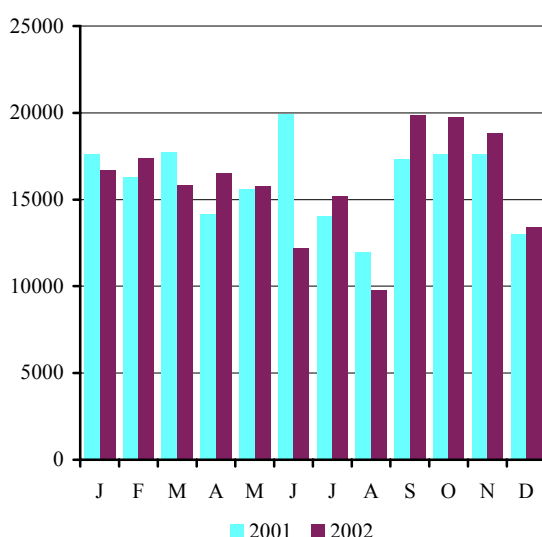
Commenting on car production last year, SMMT chief executive Christopher Macgowan said, 'After a relatively weak 2001, it was encouraging to see output rise above 1.6 million units again last year. Britain is still a major player in the production league with eight key car manufacturing sites and a host of specialist sports car makers. No other country in Europe can boast such depth and diversity.'

- ▲ December commercial vehicle production was up 2.8 per cent
- ▲ In the last quarter of 2002 CV output rose 15.7 per cent

### Commercial vehicle production

	Dec 2001	Dec 2002	% chg.	YTD 2001	YTD 2002	% chg.
<b>Total</b>	13,033	13,396	2.8%	192,873	191,315	-0.8%
<b>Home</b>	4,486	4,359	-2.8%	96,654	77,087	-20.2%
% of total	34.4%	32.5%		50.1%	40.3%	
<b>Export</b>	8,547	9,037	5.7%	96,219	114,228	18.7%
% of total	65.6%	67.5%		49.9%	59.7%	

### Monthly CV Production 2001-2002



- CV output in December rose 2.8 per cent to 13,396 units compared to 13,033 in December 2001. The year to date total of 191,315 was 0.8 per cent lower than last year.
- Exports rose by 5.7 per cent in December. Production for the home market dipped 2.8 per cent.

Christopher Macgowan, SMMT chief executive said, 'December is a short month in production terms so the near three per cent rise against last year is very good news. On an annual basis the slight overall drop caused by restructuring masks some excellent news from individual van and truck makers.'

The ONS figures also show total CV production for the last quarter of 2002 up 15.7 per cent compared to the previous quarter and up 7.8 per cent on the corresponding period a year ago. Last year's total of 191,315 is just 0.8 per cent lower than 2001's total of 192,873 units.'

	PASSENGER CARS			COMMERCIAL VEHICLES		
	Total	For Home	For Export	Total	For Home	For Export
<b>1991</b>	1 236 900	631 515	605 385	217 141	106 424	110 717
<b>1992</b>	1 291 880	702 590	589 290	248 453	118 140	130 313
<b>1993 a</b>	1 375 524	842 648	532 876	193 467	102 320	91 147
<b>1994</b>	1 466 823	848 142	618 681	227 815	132 270	95 545
<b>1995</b>	1 532 084	787 473	744 611	233 011	140 634	92 377
<b>1996</b>	1 686 134	777 922	908 212	238 314	125 830	112 484
<b>1997</b>	1 698 001	736 090	961 911	237 706	134 304	103 402
<b>1998</b>	1 748 258	727 531	1 020 727	227 379	124 538	102 841
<b>1999</b>	1 786 623	648 146	1 138 477	185 905	110 983	74 922
<b>2000</b>	1 641 452	578 462	1 062 990	172 442	96 261	76 181
<b>2001</b>	1 492 365	598 111	894 254	192 873	96 654	96 219
<b>2002</b>	1 628 020	581 212	1 046 808	191 315	77 087	114 228
<b>2000 Q1</b>	494 311	179 401	314 910	49 972	24 666	25 306
<b>2000 Q2</b>	433 240	140 548	292 692	52 061	27 345	24 716
<b>2000 Q3</b>	335 106	145 558	189 548	29 249	18 588	10 661
<b>2000 Q4</b>	378 795	112 955	265 840	41 160	25 662	15 498
<b>2001 Q1</b>	387 100	160 646	226 454	51 623	31 952	19 671
<b>2001 Q2</b>	372 395	142 864	229 531	49 675	26 436	23 239
<b>2001 Q3</b>	335 790	152 753	183 037	43 347	21 032	22 315
<b>2001 Q4</b>	397 080	141 848	255 232	48 228	17 234	30 994
<b>2002 Q1</b>	449 755	194 579	255 176	49 940	24 630	25 310
<b>2002 Q2</b>	400 529	119 032	281 497	44 504	16 226	28 278
<b>2002 Q3</b>	391 834	149 617	242 217	48 429	18 865	29 564
<b>2002 Q4</b>	385 886	117 968	267 918	51 971	19 265	32 706
<b>2001 Jan</b>	128 921	50 675	78 246	17 580	11 315	6 265
<b>2001 Feb</b>	124 163	55 434	68 729	16 290	10 085	6 205
<b>2001 Mar</b>	134 016	54 537	79 479	17 753	10 552	7 201
<b>2001 Apr</b>	112 547	45 865	66 682	14 172	8 097	6 075
<b>2001 May</b>	127 176	46 614	80 562	15 563	8 418	7 145
<b>2001 Jun</b>	132 672	50 385	82 287	19 940	9 921	10 019
<b>2001 Jul</b>	114 878	50 943	63 935	14 055	6 427	7 628
<b>2001 Aug</b>	89 350	43 180	45 540	11 960	5 994	5 966
<b>2001 Sep</b>	131 562	58 000	73 562	17 332	8 611	8 721
<b>2001 Oct</b>	145 984	53 206	92 778	17 607	6 697	10 910
<b>2001 Nov</b>	144 989	51 841	93 148	17 588	6 051	11 537
<b>2001 Dec</b>	106 107	36 801	69 306	13 033	4 486	8 547
<b>2002 Jan</b>	154 368	69 454	84 914	16 697	8 280	8 417
<b>2002 Feb</b>	147 552	65 707	81 845	17 389	10 016	7 373
<b>2002 Mar</b>	147 835	59 418	88 417	15 854	6 334	9 520
<b>2002 Apr</b>	129 541	35 958	93 583	16 534	5 451	11 083
<b>2002 May</b>	158 236	49 232	109 004	15 752	5 820	9 932
<b>2002 Jun</b>	112 752	33 842	78 910	12 218	4 955	7 263
<b>2002 Jul</b>	134 533	49 669	84 864	15 217	5 323	9 894
<b>2002 Aug</b>	112 803	45 771	67 032	13 322	5 603	7 719
<b>2002 Sep</b>	144 498	54 177	90 321	19 890	7 939	11 951
<b>2002 Oct</b>	149 654	51 672	97 982	19 761	7 251	12 510
<b>2002 Nov</b>	136 976	40 950	96 026	18 808	7 649	11 159
<b>2002 Dec</b>	97 467	26 276	71 191	13 396	4 359	9 037

**Percentage change for latest three months on:**

Previous three months	-1.5	-21.2	10.6	15.7	13.6	17.1
Same period last year	-2.8	-16.8	5.0	7.8	11.8	5.5

a - 5 week month or 14 week quarter or 53 week year

Source: ONS

