

UK vehicle output continues to grow

Production figures released today by the Office for National Statistics show that:

▲ Car production in October 2002

rose by 2.5 per cent

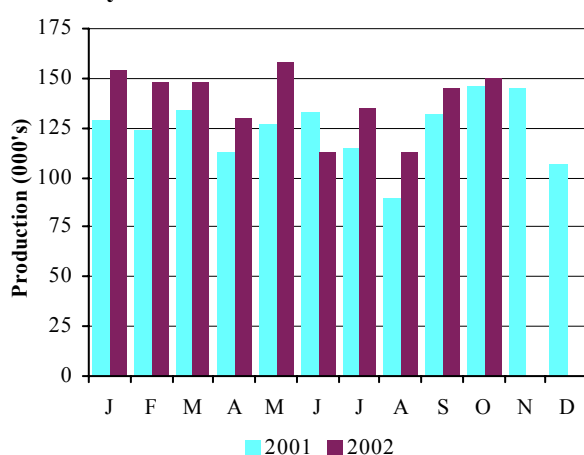
▲ Car production in YTD 2002

rose by 12.1 per cent

Car Production

	Oct 2001	Oct 2002	% chg.	YTD 2001	YTD 2002	% chg.
Total	145,984	149,654	2.5%	1,241,269	1,391,772	12.1%
Home	53,206	51,672	-2.9%	509,469	514,900	1.1%
% of total	36.4%	34.5%		41.0%	37.0%	
Export	92,778	97,982	5.6%	731,800	876,872	19.8%
% of total	63.6%	65.5%		59.0%	63.0%	

Monthly Car Production 2001-2002



- Car production rose by 2.5 per cent in October to 149,654 units. Output has risen in all but one month this year. YTD is up 12.1 per cent to 1,391,772 units.
- Rising exports continue to lead the growth, with a 5.5 per cent gain in November. Production for the home market fell by 2.9 per cent.

Commenting on the October car production figures, SMMT chief executive, Christopher Macgowan said, 'It has been a story of strong growth in vehicle production this year, with virtually every month recording a rise. We are the fourth largest car producer in the EU and are showing the strongest growth in output across Europe. As European demand picks up next year, and with more enticing models rolling out of UK plants, we expect to see production figures rise again in 2003.'

Press contacts:

Al Clarke

Tel: 020 7344 9226

aclarke@smm.co.uk

Jon Stanley

Tel: 020 7344 9263

jstanley@smm.co.uk

Growth in October CV production better than expectations

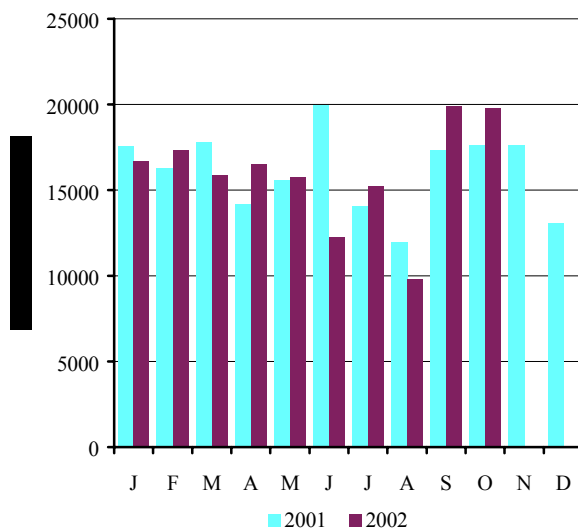
Production figures released today by the Office for National Statistics show that:

▲ CV production in October 2002 rose by 12.2 per cent

▼ CV production for YTD 2002 down by 2.0 per cent

	Oct 2001	Oct 2002	% chg.	YTD 2001	YTD 2002	% chg.
Total	17,607	19,761	12.2%	162,252	162,634	0.2%
Home	6,697	7,251	8.3%	86,117	66,972	-22.2%
% of total	38.0%	36.7%		53.1%	41.2%	
Export	10,910	12,510	14.7%	76,135	95,662	25.6%
% of total	62.0%	63.3%		46.9%	58.8%	

Monthly CV Production 2001-2002



- CV production in October increased by 12.2 per cent to 19,761 units compared with 17,607 in October 2001. The year to October total at 162,634 was 0.2 per cent lower than last year.
- Exports continued to grow, up by 14.7 per cent on last October. Home market output bucked the downward trend recording 8.3 per cent growth in October. YTD output was down by 22.2 per cent.

Commenting on the provisional figures, SMMT chief executive, Christopher Macgowan said, 'This month's performance again betters expectations and tops the significant growth recorded at the same time last year.' He added, 'The last two months' figures are particularly encouraging, especially given the level of restructuring we have seen over the last few months.'

CV Press contact:

Robin Dickeson

Tel: 07974 436641

rdickeson@smt.co.uk

	PASSENGER CARS			COMMERCIAL VEHICLES		
	Total	For Home	For Export	Total	For Home	For Export
1991	1 236 900	631 515	605 385	217 141	106 424	110 717
1992	1 291 880	702 590	589 290	248 453	118 140	130 313
1993 a	1 375 524	842 648	532 876	193 467	102 320	91 147
1994	1 466 823	848 142	618 681	227 815	132 270	95 545
1995	1 532 084	787 473	744 611	233 011	140 634	92 377
1996	1 686 134	777 922	908 212	238 314	125 830	112 484
1997	1 698 001	736 090	961 911	237 706	134 304	103 402
1998	1 748 258	727 531	1 020 727	227 379	124 538	102 841
1999	1 786 623	648 146	1 138 477	185 905	110 983	74 922
2000	1 641 452	578 462	1 062 990	172 442	96 261	76 181
2001	1 492 365	598 111	894 254	192 873	96 654	96 219
2000 Q1	494 311	179 401	314 910	49 972	24 666	25 306
2000 Q2	433 240	140 548	292 692	52 061	27 345	24 716
2000 Q3	335 106	145 558	189 548	29 249	18 588	10 661
2000 Q4	378 795	112 955	265 840	41 160	25 662	15 498
2001 Q1	387 100	160 646	226 454	51 623	31 952	19 671
2001 Q2	372 395	142 864	229 531	49 675	26 436	23 239
2001 Q3	335 790	152 753	183 037	43 347	21 032	22 315
2001 Q4	397 080	141 848	255 232	48 228	17 234	30 994
2002 Q1	449 755	194 579	255 176	49 940	24 630	25 310
2002 Q2	400 529	119 032	281 497	44 504	16 226	28 278
2002 Q3	391 834	149 617	242 217	48 429	18 865	29 564
2000 Jul	126 372	55 823	70 549	13 372	8 342	5 030
2000 Aug	74 761	32 965	41 796	5 885	3 628	2 257
2000 Sep	133 973	56 770	77 203	9 992	6 618	3 374
2000 Oct	131 522	38 712	92 810	13 872	8 565	5 307
2000 Nov	150 716	47 115	103 601	16 189	10 418	5 771
2000 Dec	96 557	27 128	69 429	11 099	6 679	4 420
2001 Jan	128 921	50 675	78 246	17 580	11 315	6 265
2001 Feb	124 163	55 434	68 729	16 290	10 085	6 205
2001 Mar	134 016	54 537	79 479	17 753	10 552	7 201
2001 Apr	112 547	45 865	66 682	14 172	8 097	6 075
2001 May	127 176	46 614	80 562	15 563	8 418	7 145
2001 Jun	132 672	50 385	82 287	19 940	9 921	10 019
2001 Jul	114 878	50 943	63 935	14 055	6 427	7 628
2001 Aug	89 350	43 810	45 540	11 960	5 994	5 966
2001 Sep	131 562	58 000	73 562	17 332	8 611	8 721
2001 Oct	145 984	53 206	92 778	17 607	6 697	10 910
2001 Nov	144 989	51 841	93 148	17 588	6 051	11 537
2001 Dec	106 107	36 801	69 306	13 033	4 486	8 547
2002 Jan	154 368	69 454	84 914	16 697	8 280	8 417
2002 Feb	147 552	65 707	81 845	17 389	10 016	7 373
2002 Mar	147 835	59 418	88 417	15 854	6 334	9 520
2002 Apr	129 541	35 958	93 583	16 534	5 451	11 083
2002 May	158 236	49 232	109 004	15 752	5 820	9 932
2002 Jun	112 752	33 842	78 910	12 218	4 955	7 263
2002 Jul	134 533	49 669	84 864	15 217	5 323	9 894
2002 Aug	112 803	45 771	67 032	13 322	5 603	7 719
2002 Sep	144 498	54 177	90 321	19 890	7 939	11 951
2002 Oct	149 654	51 672	97 982	19 761	7 251	12 510

Percentage change for latest three months on:

Previous three months	0.4	14.2	-6.4	22.7	29.2	18.8
Same period last year	10.9	-2.2	20.5	13.0	-2.4	25.7

a - 5 week month or 14 week quarter or 53 week year

Source: Office for National Statistics

