



71 GREAT PETER STREET
CORPORATE ROOM HIRE



71 Great Peter Street

71 Great Peter Street is a newly refurbished, contemporary conference and meeting facility, located in the heart of Westminster.

Within easy walking distance of St James's Park and Westminster tube stations as well as Victoria mainline railway station, 71 Great Peter Street has excellent transport links for visitors from across London and further afield.

With its impressive, open plan, bright and modern ground floor reception space to its range of flexible first floor meeting rooms, 71 Great Peter Street is the perfect choice for meetings, conferences and evening receptions and launches.



Facilities

Reception space

The 71 Great Peter Street reception space serves as a stylish, modern and open plan venue, perfect for evening receptions or product launches.

The 260m² space can accommodate up to 100 people reception-style. Its street-facing gallery windows maximise the natural light, while a full range of stage-style spot lights offer infinite showcasing possibilities.

Meeting room facilities

With a range of flexible meeting rooms situated on the first floor, 71 Great Peter Street can accommodate a range of meetings and conferences of any size.

Providing a comfortable, professional space, the seven meeting rooms can accommodate groups from eight to 80 people in combinations of boardroom and theatre-style layouts.

IT facilities

All rooms are fully equipped with high-speed wireless internet, teleconference facilities, plasma screens, laptop connections and exclusive technical support.

Out of hours IT support is charged at an hourly rate.

Room facilities at a glance

Boardroom set up



Theatre set up



Reception



Additional information

Event organisation and catering

SMMT can provide a list of recommended event organisers and external catering facilities to ensure your event runs smoothly.

For further details, please contact Claire Balch, cbalch@smmt.co.uk
tel: 020 7344 1636.



Buckingham

Buckingham is a large, airy and bright corner meeting space, overlooking Great Peter Street.

Capacity:

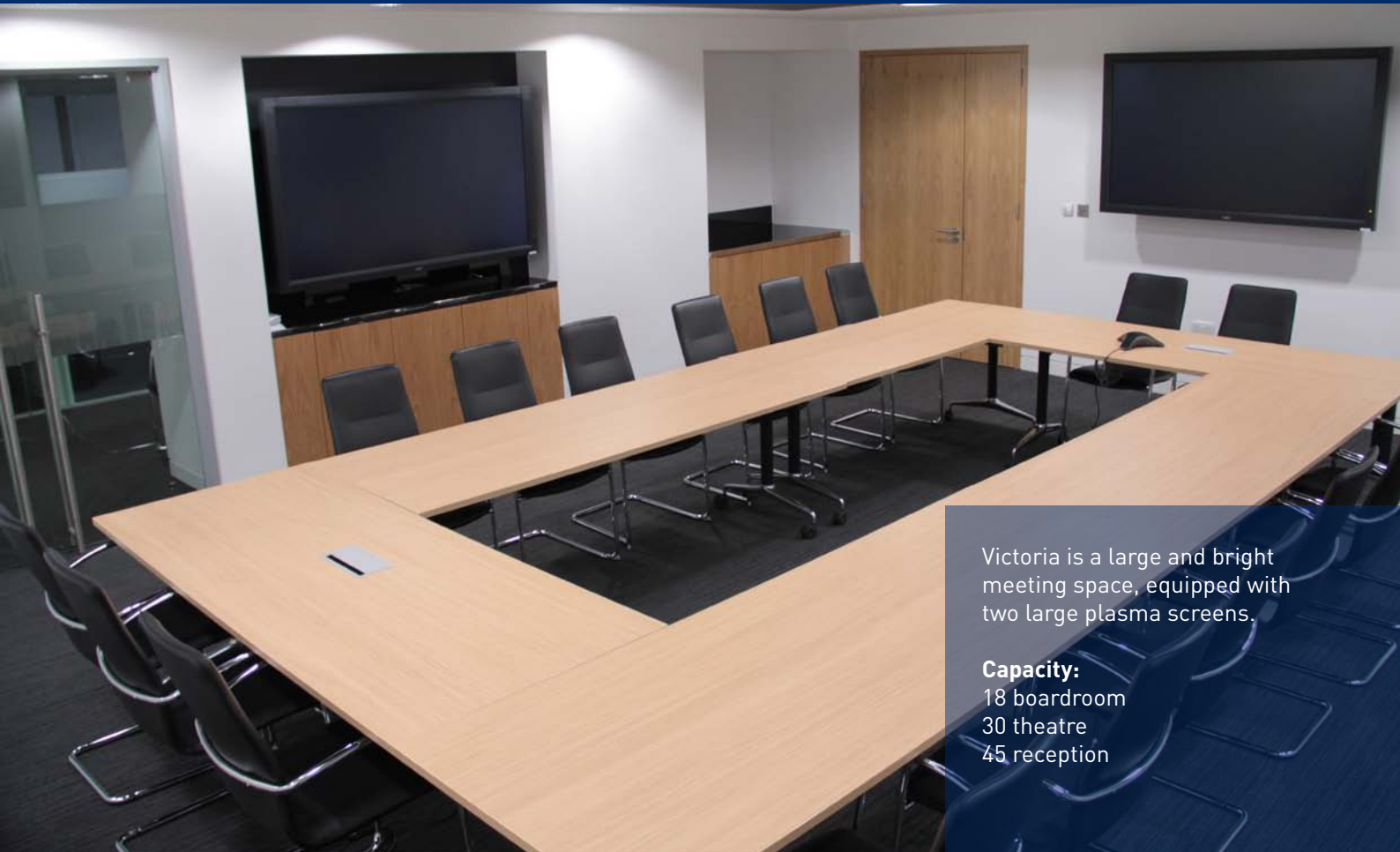
18 boardroom

30 theatre

45 reception



Victoria



Victoria is a large and bright meeting space, equipped with two large plasma screens.


Capacity:

18 boardroom

30 theatre

45 reception

Victoria and Buckingham



The Victoria and Buckingham rooms can be combined to offer a larger conference or board meeting room accommodating up to 80 people. This room is fully equipped with a sound system and microphones

Capacity:

42 boardroom


80 theatre

100 reception

Victoria and Buckingham



Parliament

A modern meeting room with a long wooden table, black chairs, a large screen, and a glass wall. The room is well-lit and has a professional appearance. The table is surrounded by black chairs with chrome frames. A large screen is mounted on the wall. A glass wall is visible in the background, and a wooden door is also present.

Parliament offers a contemporary meeting room space for 8-10 people.

Capacity: 10 boardroom

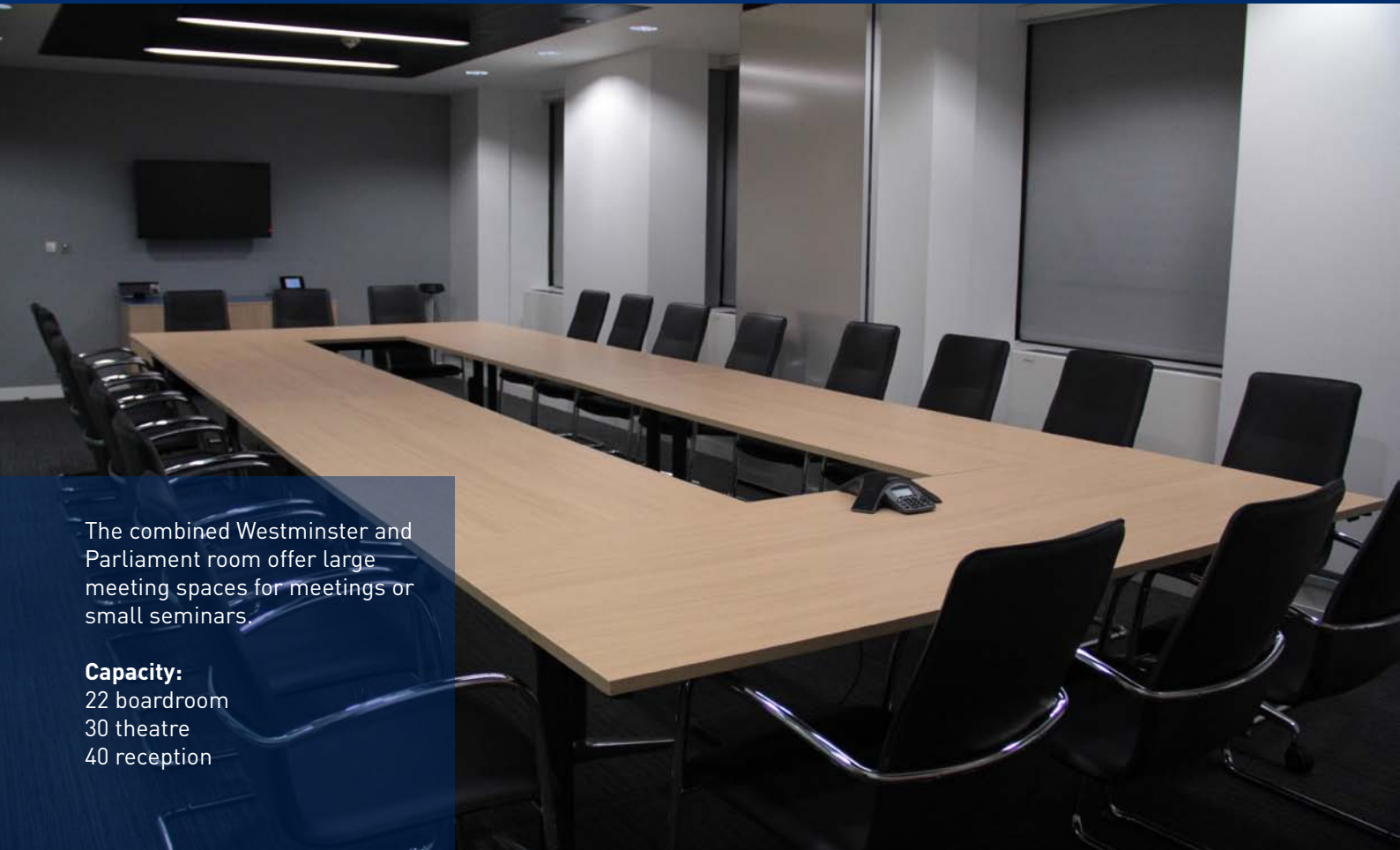
Westminster



Westminster offers a contemporary meeting room space for 8-10 people.

Capacity: 10 boardroom

Westminster and Parliament



The combined Westminster and Parliament room offer large meeting spaces for meetings or small seminars.

Capacity:

22 boardroom

30 theatre

40 reception


Whitehall



Whitehall is ideal for small meetings of between 4-6 people.

Capacity: 6 boardroom

Millbank



Millbank is for the exclusive use of video conferencing. The room has a two large plasma screens and is enabled with high-quality audio facilities, including a Polycom 8000HDX video conference camera

Capacity: 8 boardroom

Embankment



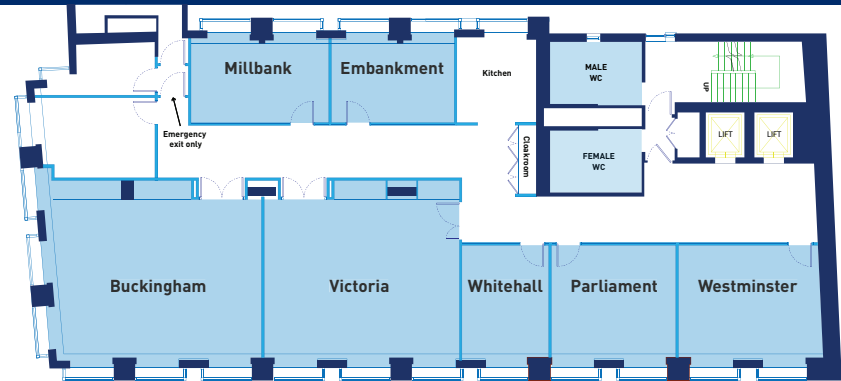
Embankment is ideal for small meetings of between 4-6 people.

Capacity: 6 boardroom

Room overview and costs

Number of meeting rooms: seven
(minimum seating 6 boardroom, maximum 80 theatre).

Reception space: 260m² accommodating up to 100 reception.



	Boardroom	Theatre	Reception	Half Day (08:00 - 12:30 or 13:00 - 17:30)	Full Day (08:00 - 17:30)
Westminster	10	N/A	N/A	£450	£700
Parliament	10	N/A	N/A	£450	£700
Westminster and Parliament	22	30	40	£800	£1200
Whitehall	6	N/A	N/A	£350	£500
Victoria	18	30	45	£800	£1200
Buckingham	18	30	45	£800	£1200
Victoria and Buckingham	42	80	100	£1500	£2200
Millbank video conferencing room	8	N/A	N/A	£400	£575
Embankment	6	N/A	N/A	£400	£575
				(14:00 - 22:00)	
Lobby/Reception area	N/A	N/A	Up to 100	£2800	

Note: Prices subject to a 50% discount for members and associated companies and 25% discount for registered charities. Booking terms and conditions are available from the SMMT, please contact Claire Balch, cbalch@smmt.co.uk tel: 020 7344 1636.

Catering



Whether it's a working breakfast, buffet lunch or simple meeting refreshments, 71 Great Peter Street offers a full range of catering services to meet your event requirements.

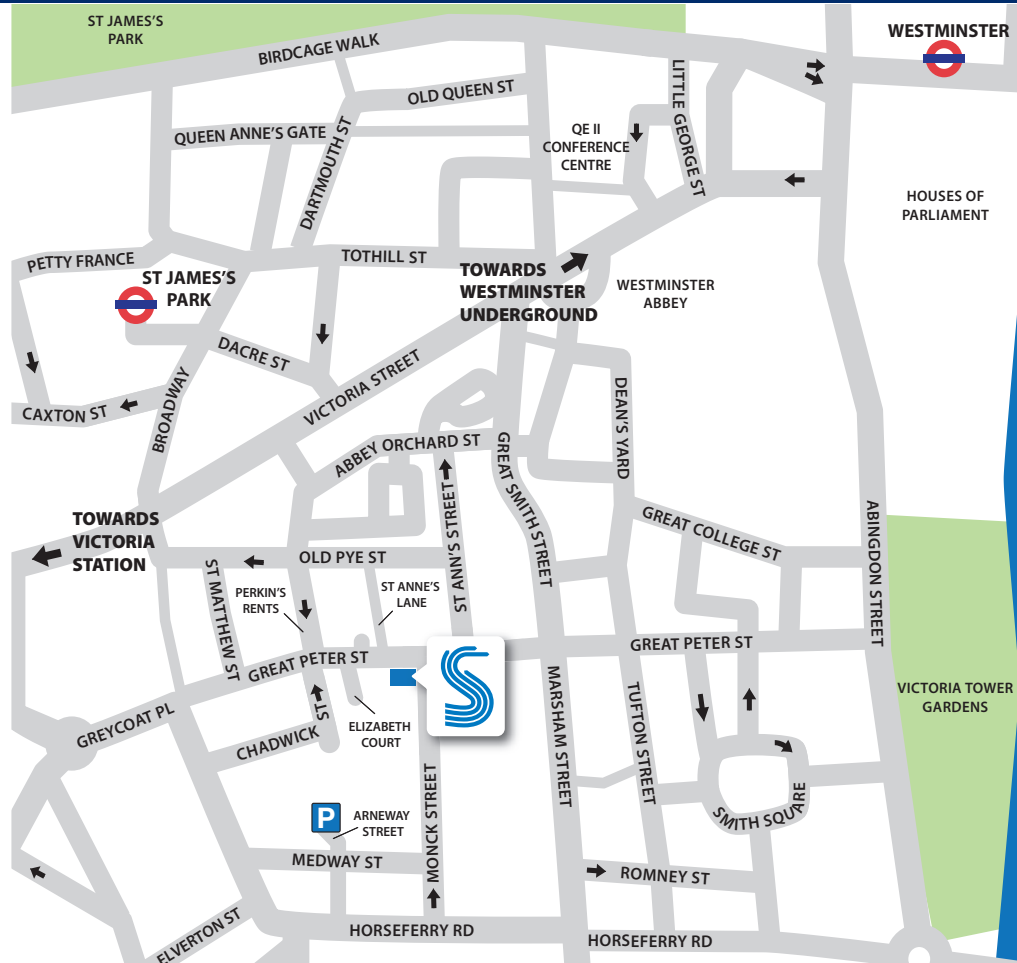
The venue is licensed to serve alcoholic drinks from Monday-Friday, between 12:00-22:00.

A full list of catering services and prices is available on request.



Location

Five minutes walk to St James's Park (District and Circle lines),
10 minutes walk to Victoria train,
tube, bus and coach station and 10
minutes walk to Westminster tube
station (Jubilee line).





The Society of Motor Manufacturers and Traders Limited
71 Great Peter Street
London SW1P 2BN
Tel: 020 7235 7000
Fax: 020 7235 3702
www.smmt.co.uk

**THE SOCIETY OF
MOTOR MANUFACTURERS
AND TRADERS LIMITED**

SMMT, the 'S' symbol and the 'Driving the motor industry'
brandline are trademarks of SMMT Ltd